

## Construction and Price of Distribution Box Switches



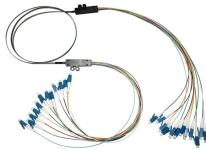
## Construction and Price of Distribution Box Switches



Kaedra enclosures for PratiKa industrial sockets are part of a complete system of Watertight enclosures from 16A to 125A providing solutions for protection, control and electrical distribution for tertiary and ...



Browse power distribution boxes with circuit breaker protection and multiple outlet configurations. Shop durable solutions for construction and emergency use.



Typical cost ranges for replacing a distribution box or service panel in the United States vary widely based on panel size, amperage, labor, and whether a full service upgrade is needed.



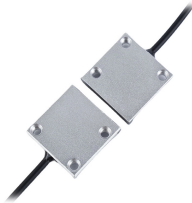
Prices vary by region due to labor rates and permitting complexity. In the Northeast, total costs including permit fees tend to run 5-15% higher than the national average; the Southeast often ...



Distribution Box Replacement Cost Guide January 24, 2026 Buyers typically pay a broad range for replacing a distribution box, driven by box size, amperage, wiring runs, and local labor rates. This ...



Generous top or bottom gutters have been created by locating the bus-link in the top or bottom of the distribution section, so there's ample room to run cables into the distribution section and make ...



The above price factors in the cost to mobilize crews, erect the equipment (on steel where applicable), and pour foundations. Aside from construction costs, the price includes engineering labor.



Using standard Pow-R-Line Xpert construction and features, these switchboards incorporate metering sections with tenant feeder circuits using meter sockets to meet local utility or customer requirements.



DRESS THE MAJORITY OF CONSTRUCTION ISSUES. IT IS IMPERATIVE TO MAINTAIN STANDARDIZATION, AND THAT COMPLETED JOB ORDERS REFLECT ANY CHANGES ON THE ...



For the new college graduate from a four-year electrical engineering curriculum working in the field of commercial and industrial power systems, this guide can serve as a starting point for ...

## Contact Us

For more information, pricing, or custom energy solutions, please contact us:

Website: <https://gdroofing.co.za>

Email: [sales@gdroofing.co.za](mailto:sales@gdroofing.co.za)

Phone: +27 72 418 9365

Address: 22 Electron Avenue, Isando, Johannesburg, 1600, South Africa

This document is for informational purposes only. Specifications subject to change without notice.

