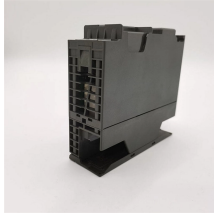


## Construction hoist configuration with electrical distribution box



## Construction hoist configuration with electrical distribution box



BEAM AND BLOCK or a beam and block construction. The typical method is to fasten metal channel on the underside of the beams, spanning at least 2 beams, and then drop the threaded Date



This document provides specifications and dimensions for electric chain hoists. It describes features of hook suspension series and motor trolley mounted series for both three-phase and single-phase ...



The worker/operator should be familiar with the hoist, hoist controls and installation/assembly procedures before being authorized to install or operate the hoist or lifting system.



This single-girder crane distribution box is for the electrical power distribution of non-standard CD type and MD type hoist and full set hoist crane. It has built-in electrical appliances such as total contactor, ...



This guide is based on the latest edition of the National Electric Safety Code (NESC) and was prepared for the design, construction, operation, and maintenance of the Company's electric facilities.



From powering heavy machinery to supporting lighting and tools, temporary power boxes must operate in harsh outdoor conditions while ensuring electrical safety and flexibility. Modern ...



Each plug-in point provides a signal connector, a 3 phase power connector and a circuit breaker next to the power connector.



Learn how to read and use an electric hoist wiring diagram. Understand key components, safety tips, and troubleshooting advice for electric hoist installation and maintenance.



A single electric cable, containing both power and control signal wires, will come out of the hoist. After the trolley has been installed on its beam and the hoist on the trolley, you will have to ...



Details the procedures for modifying or adding to existing crane and hoist installations. Ensures that all modifications comply with NEC standards and do not compromise safety.

## Contact Us

For more information, pricing, or custom energy solutions, please contact us:

Website: <https://gdroofing.co.za>

Email: [sales@gdroofing.co.za](mailto:sales@gdroofing.co.za)

Phone: +27 72 418 9365

Address: 22 Electron Avenue, Isando, Johannesburg, 1600, South Africa

This document is for informational purposes only. Specifications subject to change without notice.

