

GDR Telecom Site Energy Systems

Core Switch COM Port

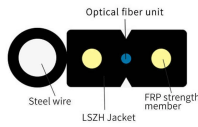


Overview

As the top and highest-throughput layer of a three-tier switch architecture, this high-performance backbone forwards data packets efficiently and virtually latency-free to connected aggregation switches resp. The hierarchy Ethernet network is a three-layer integrated setup of networking devices. The strategic design of a hierarchy network may comprise more than three layers. The Cisco Catalyst™ 9500 Series, including the Catalyst 9500X models, continues to shape the future with continued innovation that helps you reimagine connections, reinforce security and redefine the experience for your hybrid workforce big and small. They perform a vital function in ensuring the network's reliability and stability because they are in charge of routing data across the network infrastructure in a reliable and timely manner. I'm thinking I would have to create the SVIs on the Core (VLANs with default gateway IP addresses), and I would have to configure the connecting interfaces from core to access stacks as trunk ports right?

Given the VLANs are.

Core Switch COM Port



In simple campus scenarios, the switch can achieve easy configuration and high information security, while in large-scale interconnecting scenarios, the switch can realize auto-negotiated update of ...



Core switches are the high-performance backbone for three-tier switch architectures and 100% uptime in the campus LAN!



If you issue no switch on the interface, the interface will be configured as Layer3 interface and one IP address is expected. With the second option you keep the interface as Layer2 and use ...



Since each interface module provides a certain number of ports, the number of slots fundamentally determines the number of ports that the switch can support.



A core switch is a high-capacity network switch that functions as a network's backbone or core layer. It's responsible for accurately routing communication among layers and departments of ...



Evaluate the required port types, speeds, and quantities based on your existing aggregation layer switch. If budget permits, opt for a core switch with diverse port types and a higher...



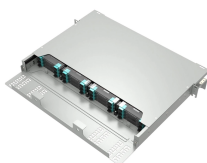
Comprehensive guide to Core, Distribution, and Access Switches. Roles in the network and important parameters explained.



The Cisco® Catalyst® 9500 Series switches are the next generation of enterprise-class core and aggregation layer switches, supporting full programmability and serviceability.



Explore what a core switch does, why it's essential for enterprise networks, and how to choose the right model. Includes real-world applications and Cisco/Huawei/Aruba model comparison.



Nothing wrong with anything you've proposed and you can absolutely have two fibre connections bundled as a port-channel back to the core. I would also recommend looking at setting spanning tree ...

Contact Us

For more information, pricing, or custom energy solutions, please contact us:

Website: <https://gdroofing.co.za>

Email: sales@gdroofing.co.za

Phone: +27 72 418 9365

Address: 22 Electron Avenue, Isando, Johannesburg, 1600, South Africa

This document is for informational purposes only. Specifications subject to change without notice.

