

# Cross-sectional view of high-voltage busbar



## Overview

**Abstract:** This article presents a comprehensive analysis of busbar design for high-voltage applications, focusing on the current carrying capacity and thermal performance. Busbars simplify high-current distribution, reduce clutter, and can improve reliability if sized correctly. Plan for continuous current + surge; hotspots often occur at studs and. An electric busbar (also written as bus bar) is a metallic bar, strip, tube, or rod that conducts current from one place to another in a safe manner with minimal energy losses. Normally made from copper or aluminium. OEMs first started using busbars in EV batter packs as interconnects for battery modules. They also make sense wherever high power is required, such as connections to. That is where busbars play an important role (Figure 2). These conceptually simple components are easy to describe: a substantial, rigid piece of metal, usually rectangular in cross section and usually made from copper but sometimes aluminum, is used to carry a large amount of current from source.

## Cross-sectional view of high-voltage busbar



Most busbar configurations are not insulated to improve convective cooling and allow easy access for new connections. Since most busbars work with higher-voltage three-phase power, many electrical ...



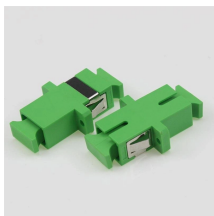
Busbars are constructed from conductive metal bars, typically made of copper or aluminum, with a large cross-sectional area and insulated by ...



Abstract: This article presents a comprehensive analysis of busbar design for high-voltage applications, focusing on the current carrying capacity and thermal performance.



This paper discusses the advantages and limitations of cable connections, rigid bus bar connection and flexible bus bar connections for high current density applications.



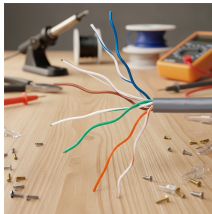
Although the copper (or aluminum) cross-section area for a given current is nominally the same for busbar and cable, the reality is that busbars are easier to install, offer multipoint pickoff, are ...



Busbars are constructed from conductive metal bars, typically made of copper or aluminum, with a large cross-sectional area and insulated by specialized materials. These metal bars ...



Design busbars for equal current sharing, low voltage drop, and scalability. Includes sizing, material selection, and thermal considerations.



Design busbars for equal current sharing, low voltage drop, and scalability. Includes sizing, material selection, and thermal considerations.



Additions of tabs and mounting holes change the cross-sectional area of the conductor, creating potential hot spots on the bus bar. The maximum current for each tab or termination must be ...



This paper reviews the state-of-the-art busbar design and provides design guidance in planar, laminated, and PCB-based busbars.



There are different ways to terminate a busbar, and the choice here is driven by cost, application and the difficulty of assembling the busbar into the appropriate location in the vehicle.



A flat busbar will have more surface to cool down than a round or square busbar. Also since rectangular busbar provides more surface area relative to its cross-sectional area, it is also mitigating the effects ...

## Contact Us

For more information, pricing, or custom energy solutions, please contact us:

Website: <https://gdroofing.co.za>

Email: [sales@gdroofing.co.za](mailto:sales@gdroofing.co.za)

Phone: +27 72 418 9365

Address: 22 Electron Avenue, Isando, Johannesburg, 1600, South Africa

This document is for informational purposes only. Specifications subject to change without notice.

