

Customization Process for Upgraded Version of Optical Wave Multiplexer for Airports



Customization Process for Upgraded Version of Optical Wave Multiplex



We propose a reconfigurable optical add/drop multiplexer-demultiplexer based on arrayed waveguide grating with fold-back technique in AWG.



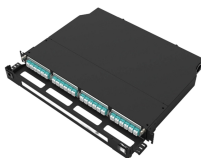
Here, we develop a novel design approach that co-optimizes inverse-designed wavelength division multiplexers and distributed Bragg gratings to achieve ultra-low crosstalk without compromising ...



These high-quality optical add-drop multiplexer products are made in the USA. the FiberPlex TD-OADM (Optical Add-Drop Multiplexer) offers a cost-effective method for removing and rerouting individual ...



By considering these parameters, engineers can ensure the efficient and reliable operation of WDM multiplexer and demultiplexer in high-capacity optical networks. At FS, we offer a ...



By making use of the Release 8.0 MSTP features and configuration flexibility, a Cisco DWDM network can scale to 112 channels of composite DWDM traffic, using both the C band and ...



Explore cutting-edge optical multiplexing techniques like DWDM and CWDM to maximize fiber bandwidth and boost network capacity. Click for insights!



The foundation of the Centrix® system is a cassette that can be tailored to include a variety of optical devices, including Wavelength Division Multiplexing (WDM), providing flexibility and functionality ...



The switching or reconfiguration functions of a ROADM can be achieved using a variety of switching technologies, including microelectromechanical systems (MEMS), liquid crystal, thermo optic and ...



This guide gives a top level understanding of Wavelength Division Multiplexing, Coarse Wavelength Division Multiplexing and Dense Wavelength Division Multiplexing.



By making use of the Release 8.0 MSTP features and configuration flexibility, a Cisco DWDM network can scale to 112 channels of composite DWDM ...



In this paper, we propose a ROADM architecture composed of space switches and wavelength-routing switches. Space switches have lower per-port cost than wavelength-routing ...

Contact Us

For more information, pricing, or custom energy solutions, please contact us:

Website: <https://gdroofing.co.za>

Email: sales@gdroofing.co.za

Phone: +27 72 418 9365

Address: 22 Electron Avenue, Isando, Johannesburg, 1600, South Africa

This document is for informational purposes only. Specifications subject to change without notice.

