

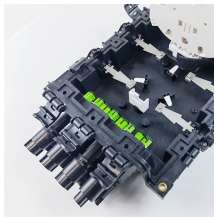
## Customs Declaration 6-core bend-insensitive optical fiber



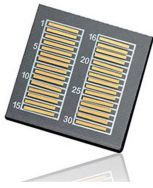
## Customs Declaration 6-core bend-insensitive optical fiber



Bend-insensitive single mode fibres (ITU-T G.657.A1 and G.657.A2) are a crucial part of the world's shift towards flexible and reliable connectivity. They are the only fibres capable of securing the whole fibre ...



That is why we designed our reduced-clad fiber specifically to be bend insensitive. Corning RCBI optical fiber is the first reduced-clad fiber compatible with G.657 and G.652. This bend-insensitive fiber ...



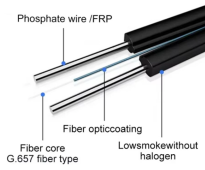
This article explains G.657 fiber standards, their bend performance intent, subtype differences, and real deployment implications in modern fiber networks.



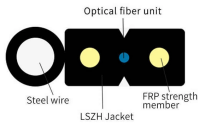
Yes, these fiber connectors are compliant with EIA/TIA 604 standard. I check ...



Optical fiber is sensitive to stress, particularly bending. When stressed by bending, light in the outer part of the core is no longer guided in the core of the fiber so some is lost, coupled from the core into the ...



Yes, these fiber connectors are compliant with EIA/TIA 604 standard. I check information about product qualifications and certifications on the website and in the product documentation.



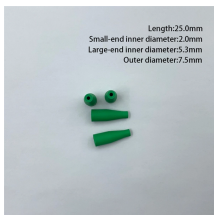
Optimized for use at 1310 nm, these fibers are used in all PM applications for data and telecom. The bend insensitive versions offer the lowest bend loss and extinction ratios at small bend diameters, ...



The OM4 MM P is also a bend-insensitive fiber optic cable featuring a tight bend radius to minimize bending loss and simplify installation. Laser-optimized, OM4 performance ensures an AV fiber optic ...



Sumitomo Electric Industries, Ltd. (SEI) offers a bend-insensitive single-mode optical fiber “PureAccess™” made by the Vapor Phase Axial Deposition (VAD) method, enabling customers to ...



Since the geometrical and optical characteristics of fibres given in clause 6 are barely affected by the cabling process, this clause gives recommendations mainly relevant to transmission characteristics ...



This fiber optic cable is a full-spectrum single mode fiber that experiences virtually no signal loss in tight bends and difficult cable routes. Installs "Like Copper" which saves on Installation Costs.

## Contact Us

For more information, pricing, or custom energy solutions, please contact us:

Website: <https://gdroofing.co.za>

Email: [sales@gdroofing.co.za](mailto:sales@gdroofing.co.za)

Phone: +27 72 418 9365

Address: 22 Electron Avenue, Isando, Johannesburg, 1600, South Africa

This document is for informational purposes only. Specifications subject to change without notice.

