

GDR Telecom Site Energy Systems

Cut the cable tray at the top



Cut the cable tray at the top



Cut each wire with one clean cut – eliminating any grinding or touch-up. Cut the bottom wires first, in order as shown, from the underside of the tray. Rest the lower jaw of the cutters against the cradle ...



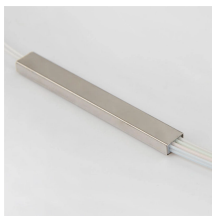
Cut at an angle away from the new cable tray end.



Each tray section should be bonded to an adjoining section using listed bonding jumpers or a continuous ground wire and clamps (such as a copper ground bolt). Powder coated tray requires the removal of ...



Always use side-action bolt cutters. Angle all cuts away from the new end. Cut each wire with one clean cut whenever possible. Remove any sharp edges to eliminate possible damage to cables.



In this video, we'll cover the essential steps of marking and cutting cable trays. We'll explore: 1. Measuring and marking: Accurate measurement and marking techniques for cable...



Hilti's cordless bandsaw is an appropriate tool for cutting low height, thin metal products such as cable ladders and trays and support channels. Accurate cutting is achieved with low noise and debris.



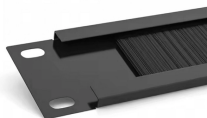
This short shows key steps: cutting sheet metal to size, punching or slotting for wire access, bending edges to form the tray shape, welding joints for strength, and smoothing edges for ...



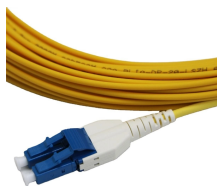
To properly bond Hubbell ® painted cable tray, remove the plastic masking device from the trays on each end (exposing the pre-galvanized wire), and splice sections together using Hubbell ® splice kits.



This guide aims to provide clear, step-by-step instructions and safety tips to ensure you can cut cable trays efficiently and safely, maintaining your system's integrity and compliance with ...



Custom Cable Tray Bend Cutting on Site
 #CableTray #ElectricalWork #ConstructionSkills
 #Engineering #MetalFabrication



Our wind certification report provides you with list of acceptable B-Line series cable tray supports, fittings and covers based off of the environmental conditions, cable loading, and type of cable tray in your ...



Cut the bottom wires first, in order as shown, from the underside of the tray. Rest the lower jaw of the cutters against the cradle wire and cut at an angle away from the new end. Cut the side wires next, ...

Contact Us

For more information, pricing, or custom energy solutions, please contact us:

Website: <https://gdroofing.co.za>

Email: sales@gdroofing.co.za

Phone: +27 72 418 9365

Address: 22 Electron Avenue, Isando, Johannesburg, 1600, South Africa

This document is for informational purposes only. Specifications subject to change without notice.

