

Detailed Explanation of Finnish DC Distribution Box Parameters



Detailed Explanation of Finnish DC Distribution Box Parameters



In this Instruction Manual (Basic), the safety instruction levels are classified into "WARNING" and "CAUTION".



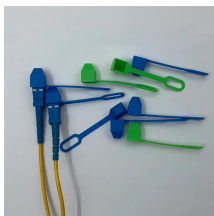
Fingrid's updated General Connection Terms have been confirmed by the Finnish Energy Authority, Energiavirasto on 28th of December 2021. The updated version is called YLE2021 and it immediately ...



This societal and technology trend report was developed by the DC Power Distribution Sub-Working Group (DCPD-SWG) of the Societal and Technology Trend Working Group (STTWG) in the IEC ...



Based on the above background on the general characteristics of electricity distribution and specific regulation of electricity distribution in the Finnish context, we proceed to study the actual ...



This research investigates the returns from the Finnish low-voltage electricity distribution business and compares them to returns from three European industry indices.



It details the DCDB's main technical parameters including a rated working voltage of DC48V, maximum input load current of 63A, and 10 output branches consisting of 4 branches at 10A and 6 branches at ...



In this booklet you will find installation instructions for your Power Distribution 5. Please read the instructions carefully to ensure that no unnecessary errors occur.



This research investigates the returns from the Finnish low-voltage electricity distribution business and compares them to returns from three ...



In this paper we look at the return levels of the Finnish DSOs from 2015 onwards and discuss the rate of return regulation model used since 2016 as a driver of the observed return levels.



The update to the parameters for the seventh regulatory period will be made in the same way as their determination for the sixth regulatory period, using the methods described in this document.



It is the first step in preparing a critical response plan, allowing you to become thoroughly familiar with the electrical distribution system layout and design in your facility.



This guide is intended to present the fundamentals of power system design for commercial and industrial power systems. It is not designed as a substitute for educational. The ...



In the proposed paper, the basic concepts and the techno-economical potential of the low voltage DC-systems are discussed. Also aspects of developing required power electronic equipment for low ...



Distribution boxes, also known as DB boxes, serve as critical components in electrical systems by distributing electrical power safely and efficiently to various circuits within a building.

Contact Us

For more information, pricing, or custom energy solutions, please contact us:

Website: <https://gdroofing.co.za>

Email: sales@gdroofing.co.za

Phone: +27 72 418 9365

Address: 22 Electron Avenue, Isando, Johannesburg, 1600, South Africa

This document is for informational purposes only. Specifications subject to change without notice.

