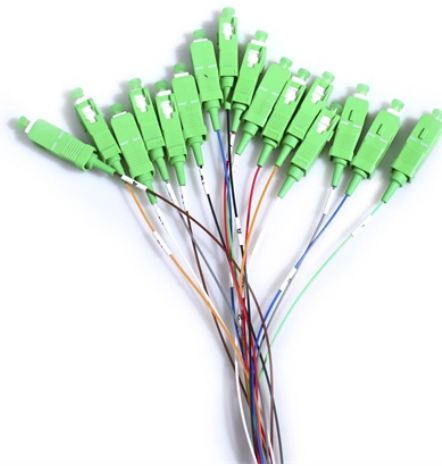


Detailed Explanation of the Fabrication of Horizontal Elbows for Cable Trays



Overview

Professional Cable Tray Elbow Making | Metal Fabrication Tutorial Learn how to make cable tray elbows professionally with step-by-step guidance. Whether you are a DIY enthusiast. This manual is designed to guide workers through the detailed production process of ladder cable trays, including the manufacture of horizontal elbows, tees, crosses, reducing bends, and vertical bends, with emphasis on precision, safety, and quality control. The method gives details of how the work. The work covered under this section consists of the furnishing of all necessary labor, supervision, materials, equipment, tests and services to install complete cable tray systems as shown on the drawings. We only need to offer you some accessories and cut some wires of the tray, then finished. The following steps reached you on how.

Detailed Explanation of the Fabrication of Horizontal Elbows for Cable



Discover the detailed process on how to produce cable trays, covering everything from material selection to assembly and surface treatment. Learn key techniques for efficient cable tray ...



The document outlines procedures for cable tray fabrication and installation for the HA MBD project. It includes sections on scope of work, reference documents, required materials and equipment, safety ...



This article provides an in-depth guide on how to produce wire mesh cable trays and their complex connectors, such as horizontal elbows, tees, crosses, reducers, and vertical bends.



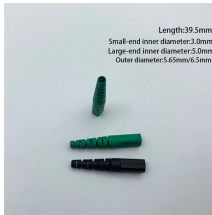
The purpose of this article is to define the sequence and methodology for the installation of electrical cable trays, cable trunking, cable raceways and boxes, junction and pull boxes.



This video shows metal fabrication techniques, DIY cable tray projects, and tips for perfect bends and joints.



This manual is designed to guide workers through the detailed production process of ladder cable trays, including the manufacture of horizontal elbows, tees, crosses, reducing bends, ...



This document provides information about cable trays and accessories, including straight cable trays, perforated trays, returned edge and flange types, and bent cable trays.



Making bent elbows for cable trays according to the formulas provided in the diagram is for reference only. The data is directly related to the width or height of the cable tray, and calculations can be ...



A. General: Except as otherwise indicated, provide metal cable trays, of types, classes and sizes indicated; with splice plates, bolts, nuts and washers for connecting units.



Compared with traditional cable trays that need to make extra elbow or cross, cable basket is much easier. We only need to offer you some accessories and cut some wires of the tray, then finished.

Contact Us

For more information, pricing, or custom energy solutions, please contact us:

Website: <https://gdroofing.co.za>

Email: sales@gdroofing.co.za

Phone: +27 72 418 9365

Address: 22 Electron Avenue, Isando, Johannesburg, 1600, South Africa

This document is for informational purposes only. Specifications subject to change without notice.

