





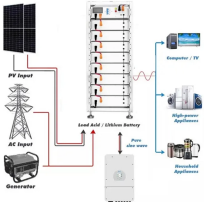
## Diagram of Network Cabinet Cable Bundling Working Principle



### Overview

Each module is connected to its own run of cable (two modules in one place; two cables. All cables terminate onto a patch panel at the common point. Cables from modules terminate onto the back of the patch. This project focuses on the chaotic cabling in a certain tumor hospital's data center, where equipment is temporarily stacked everywhere, severely affecting normal business operations and making it difficult to perform regular maintenance. The goal is to rectify the cabling to achieve a neat and. This section describes the general methods and requirements for cable routing and binding. In an equipment room installed with supports and ESD floor, cables can go through the interlayer (the space between the concrete floor and the ESD floor) or the cable trough. Today's electronic systems wiring includes voice, data, video, audio, security and control. The. – Sarah Chen, Senior Network Engineer at TechFlow Solutions Studies consistently show that organized cabling enhances airflow, making systems up to 20-30% more energy-efficient by reducing cooling needs. Before a single cable is.

## Diagram of Network Cabinet Cable Bundling Working Principle

	<p>Completed cable bundles can be hooked directly onto the tie saddles. By eliminating the need to fish cable ties through small holes or around lacer bars, tie saddles reduce installation time.</p>
	<p>The goal of forward cable management is to create bundles of horizontal twisted pair cables from the entry point of the server room (or network area) to the patch panel cabinets.</p>
	<p>Cabinet Layout: Plan the U-space allocation for servers, switches, PDUs (Power Distribution Units), patch panels, and other equipment. Follow the “switches top and middle, servers ...</p>
	<p>Network cabinet cabling describes the structured arrangement and connection of all network components within a server cabinet. The aim is to create a functional, maintainable and secure ...</p>
	<p>This section describes the general methods and requirements for cable routing and binding.</p>



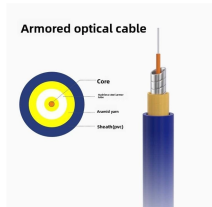
A step-by-step guide to structured cabling patch panel setup. Learn best practices to organize network cables in your data center for peak performance.



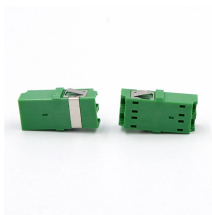
The distribution of electricity over copper cables increases heat and electromagnetic interference that can impact individual cables as well as cross cable interference with other twisted ...



Hubbell's NEXTFRAME® Ladder Tray is the effective and widely used cable runway that supports and delivers bundles of cable between cabinets, racks, and closets, along walls, and suspended from ...



The mounting screws fix the panel into a cabinet or enclosure using cage nuts supplied with the panel. Cable tidy rings may be fitted to the panel in either a horizontal or vertical orientation. When installed ...



Effective cable routing in your wall mount network cabinet requires understanding how different cable types behave and interact. Route cables along designated pathways within the cabinet to maintain ...

## Contact Us

For more information, pricing, or custom energy solutions, please contact us:

Website: <https://gdroofing.co.za>

Email: [sales@gdroofing.co.za](mailto:sales@gdroofing.co.za)

Phone: +27 72 418 9365

Address: 22 Electron Avenue, Isando, Johannesburg, 1600, South Africa

This document is for informational purposes only. Specifications subject to change without notice.

