

Diagram of wire fixing in cable tray

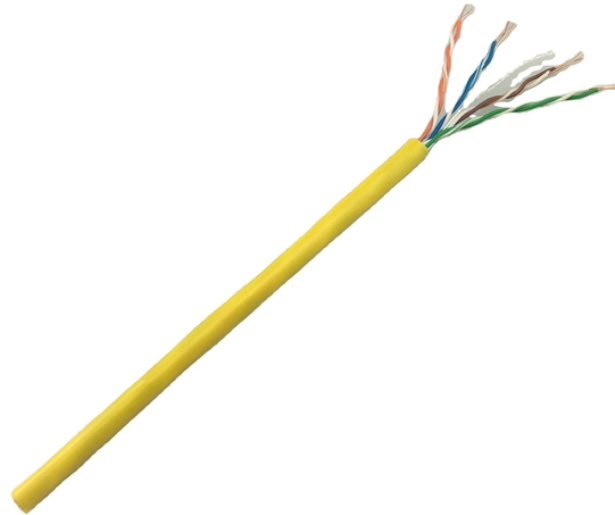


Diagram of wire fixing in cable tray



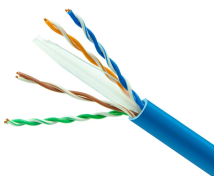
Download Snake Tray drawings detailing our innovative cable trays, cable management, and power distribution solutions. We sweat the details!



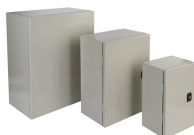
Learn about effective Cable Tray Design and Layout for electrical systems. Our guide covers planning, material choice, safety, and maintenance.



Download a comprehensive set of Cable Tray Installation CAD Blocks in DWG format, ideal for electrical engineers, MEP designers, and industrial layout planners.



This Cable Tray Fixing CAD Drawing File presents a detailed DWG layout suitable for electrical design and cable management systems. The plan includes fixing ...



When fitting cable trays and their accessories, the products are cut on site to create changes of direction, adjust sections, etc. Damage can also occur during handling; as a result, both the ...



Cable tray length is selected based on the load to be supported, the distance between the supports (also referred to as the span), and handling and installation constraints.



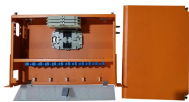
Repeat as needed. For various wire cutting patterns and installation diagrams, refer to the documentation included with the connectors and connector kits (sold separately).



Once a few hangers are hung at points along the tray run, a carpenter's string or baling wire strung from end to end will assist in establishing the elevations for the tray supports.



These documents: ANSI/NEMA VE-1, Metal Cable Tray Systems; NEMA VE-2, Cable Tray Installation Guidelines; and NEMA FG-1, Non Metallic Cable Tray Systems, are an excellent industry resource in ...



Le chemin de câbles en treillis métallique et les accessoires Legrand/ Cablofil sont disponibles dans diverses finitions pour répondre à tous les besoins de l'industrie en termes de décoration ou de ...



Some applications may require the cable tray to support the weight of a single, dead object in addition to the cable loads. Specifications typically require this to be applied at the midpoint of the span between ...



Each tray section should be bonded to an adjoining section using listed bonding jumpers or a continuous ground wire and clamps (such as a copper ground bolt). Powder coated tray requires the removal of ...

Contact Us

For more information, pricing, or custom energy solutions, please contact us:

Website: <https://gdroofing.co.za>

Email: sales@gdroofing.co.za

Phone: +27 72 418 9365

Address: 22 Electron Avenue, Isando, Johannesburg, 1600, South Africa

This document is for informational purposes only. Specifications subject to change without notice.

