

Dimensions of a Class I Safety Control Distribution Box



Overview

What Does Class 1 Division 2 Mean?

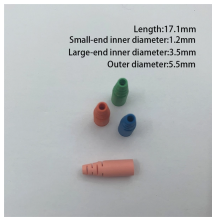
When it comes to protecting electrical equipment in hazardous locations, Class 1 Div 2 enclosure standards. Lift-Off Cover— The removable, screw-secured cover is best for full. For use indoors or outdoors, in areas which are hazardous due to the presence of flammable gases and vapors, or combustible dust Used in conjunction with magnetic starters or contactors for remote control of motors and other electrical apparatus For installation in petroleum refineries, chemical. Warom Explosion proof Distribution Boxes. Flameproof enclosure Ex d IIB+H2 Copper-free aluminium enclosure, powder coated surface. Equipped with a specialized hinge structure which can prevent damage to the flameproof joints when opening and closing the box and greatly prolongs the service life. The. ATEX Detectors, Control & Distribution Units Zone 1 & Zone 2 Control Station Weatherproof Ex ed - Eaton GHG 411 82 Eaton MEDC GHG 411 82 are ATEX control & distribution junction boxes intended for use in potentially explosive atmospheres in ATEX & IECEx Zone 1 and Zone 2 hazardous areas - suitable. Hazardous location electrical

enclosures meet hazardous safety standards by sealing electrical components inside for protection against explosions or fires.

Dimensions of a Class I Safety Control Distribution Box



Bodies have 1/2", 3/4" or 1" dead end or through feed conduit hubs with integral bushing for protection of wire insulation. Covers and bodies are available in Feraloy or copper-free aluminum for light weight ...



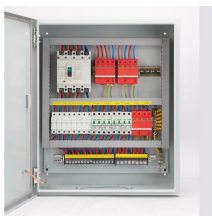
Understand Class 1 Div 2 enclosure requirements, design rules, and uses in hazardous locations to ensure safety, compliance, and reliable performance.



Choose from our selection of hazardous location electrical boxes, including outlet boxes and covers, weatherproof outlet boxes and covers, and more.



They offer safe protection even when they are exposed to extreme environmental conditions, aggressive chemical media or high mechanical stress. The narrow sides within the enclosure hold threaded ...



The boxes can be combined and installed freely to save space and meet the requirements of various distribution systems. Client requirements can be incorporated upon request.



Determining the classification of a specific location requires a thorough understanding of the particular site. An exhaustive study of the site must be undertaken before a decision can be made as to what ...



Division and zone classification. In Class I locations, an installation must be classified as using the division classification system meeting paragraphs (c), (d), (e), and (f) of this section or using the zone ...



Hazardous location electrical enclosures meet hazardous safety standards by sealing electrical components inside for protection against explosions or fires. These enclosures install in locations ...



For decades, the only explosion protection technology available in North America was the cast metal enclosure systems designed for Class I, Division 1 environments, also known as NEMA 7 ...



(Except Acetylene Class I, Zone 1) These control & distribution stations are manufactured from a UV stable, impact resistant polyamide; cover fixing screws are stainless steel thus ensuring a corrosion ...

Contact Us

For more information, pricing, or custom energy solutions, please contact us:

Website: <https://gdroofing.co.za>

Email: sales@gdroofing.co.za

Phone: +27 72 418 9365

Address: 22 Electron Avenue, Isando, Johannesburg, 1600, South Africa

This document is for informational purposes only. Specifications subject to change without notice.

