

## Dimensions of a No-Drill Distribution Box for Data Centers

### 可选配件



## Dimensions of a No-Drill Distribution Box for Data Centers



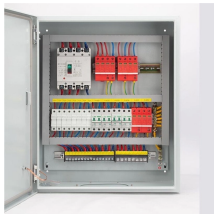
Amphenol LTW's distribution boxes facilitate efficient cable management, easy installation with pre-wired configuration, and provides a centralized distribution point for M8 and M12 connectors.



Model Description / Cabinet dimensions (H x W x D): 1800 mm x 600 mm x 300 mm The following figure shows the model naming conventions for a power distribution box.



If you need a large electrical box for your factory, telecom cabinet, or data center, Linkwell gives you the flexibility and safety you want. Their boxes handle tough jobs, keep your wiring ...



Mechanical ... Environmental ... Wiring (PE) ... Wiring diagram shows PNP wiring. Actual units use PNP status indicator or no status indicator. Eight-port DC Micro Distribution Box



Changsong Cowns modern R& D center for developing electric ...



Changsong Cowns modern R& D center for developing electric products with full-line of high-tech moulding, manufacturing equipment and great strength of technical support, besides advanced ...



imum of 6 or 12 links. The self-assembly zone distribution box can be installed in technical flooring or technical ceilings and can house all LC. 2 fibre optic modules. It can accept up to 6 fibre ...



KLV energy compact distribution boxes now provides even more flexibility. The family is complemented thanks to new 5-row flush-mounted and hollow-wall distribution boards with up to 60 modules plus 10 ...



General Technical Particulars for LT Distribution Boxes : - The L.T. Distribution Boxes should be of the dimensions as per the drawing & details in the table furnished.



This guide explores control panels, electrical boxes, breaker panels, bus bars, junction boxes, and custom enclosures to help you understand their sizes, types, and common applications.



Engineering data for CAD or CAE systems are available in the CAX Download Manager at [siemens /lowvoltage/cax](https://www.siemens.com/lowvoltage/cax)

## Contact Us

For more information, pricing, or custom energy solutions, please contact us:

Website: <https://gdroofing.co.za>

Email: [sales@gdroofing.co.za](mailto:sales@gdroofing.co.za)

Phone: +27 72 418 9365

Address: 22 Electron Avenue, Isando, Johannesburg, 1600, South Africa

This document is for informational purposes only. Specifications subject to change without notice.

