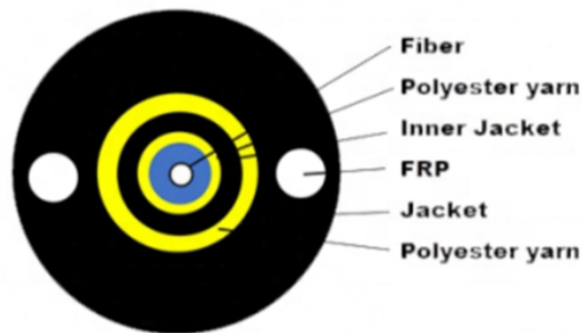


# Display all IPs under the core switch



## Overview

You can run the `display arp` command to view IP addresses and interfaces of servers directly connected to a switch. If device is a router (or L3 switch), it doesn't record an ingress src IP and dest IP, if not on a connected network, would only be recorded if using a route cache. So, as you've noted, they don't keep IPs and ports together, you generally. Is there a way I can find the list of IP addresses connected to a switch (may be Unix command), so that I can visit each desk, run a command, and check all the active IP addresses (computers) connected to that switch, and based on that I can find out to which switch that specific IP address is. All commands were tested on HP/Aruba 5400 switches (specifically 5406Rzl2), but will work on any model with recent firmware versions (16). If you can get to an exec mode prompt on the device you can run this is the configuration that is applied when the device is reloaded (booted). Enable and Config mode on Mobility Conductor and managed device.

## Display all IPs under the core switch



IP is a layer-3 protocol, and IP addresses are in the packet headers, ...



This article provides a comprehensive guide to locating IP addresses associated with Cisco switches, covering various methods and utilizing relevant command-line interface (CLI) commands. ...



show switch ip show switch ip Description Displays the IP address of the controller and VLAN ID. No parameters. Example The output of this command shows the IP address and VLAN ID of the controller.



I'm not a network engineer. I'm needing to figure out how are Cisco switches are configured. We have 5 catalyst 3850's and 2 catalyst 9300 devices. How can I easily see how they ...



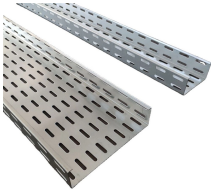
First problem, network devices do not generally keep track of all IPs because they often don't need them. For example, a switch will record an incoming frame's src MAC to the ingress port, ...



Meanings of fields in the command output are as follows: The IP ADDRESS field displays IP addresses of servers directly connected to the switch. The INTERFACE field displays switch ...



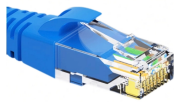
Today I had a client that needed some changes made on their LAN, I knew their name, and their network address, and common sense told me which of the core switches they were connected to.



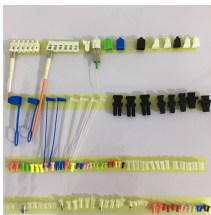
This document provides commands for viewing interface, VLAN, MAC address, connected device, and DHCP configuration information on a network switch. It lists commands such as "show interface ...



IP is a layer-3 protocol, and IP addresses are in the packet headers, which are encapsulated inside the ethernet frame. A switch doesn't strip off the frame to look at the IP headers ...



Note: Debugs/show commands shows IOSd's view of the system ex, debug ip packet shows ip packets IOSd has visibility on. • Each Supervisor module and each switch in a stack runs its own Instance of ...



All commands were tested on HP/Aruba 5400 switches (specifically 5406Rzl2), but will work on any model with recent firmware versions (16.x or newer), except for the hardware features ...

## Contact Us

For more information, pricing, or custom energy solutions, please contact us:

Website: <https://gdroofing.co.za>

Email: [sales@gdroofing.co.za](mailto:sales@gdroofing.co.za)

Phone: +27 72 418 9365

Address: 22 Electron Avenue, Isando, Johannesburg, 1600, South Africa

This document is for informational purposes only. Specifications subject to change without notice.

