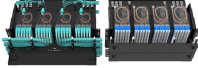


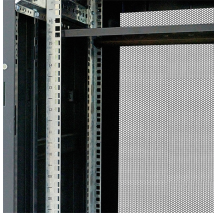
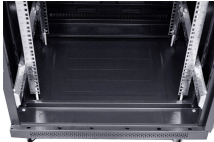


Distribution Box Bending Dimension Specification Table and Diagram



Distribution Box Bending Dimension Specification Table and Diagram

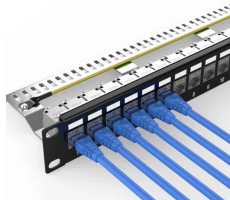
	<p>L.T. Distribution Box Specification The document provides specifications for low voltage distribution boxes used with distribution transformers of various ratings.</p>
	<p>The area distribution box associated with the copper or optical feedthrough sockets allows total flexibility: the connections close to the workstation are centralised.</p>
	<p>The wide range of distribution boards enables each customer to select an individual and economical configuration according to his requirements and satisfaction.</p>
	<p>IEC 62262 IK10.</p>
	<p>Eaton's range of power distribution assemblies not only provides you optimum power distribution and motor control functionalities, they meet your most demanding requirements for safety and flexibility.</p>



General Technical Particulars for LT Distribution Boxes : - The L.T. Distribution Boxes should be of the dimensions as per the drawing & details in the table furnished.



This document provides specifications for various types of plastic distribution boxes, including their dimensions and features. It describes HA, HK, and LGD series boxes with dimensions ranging from ...



Complete specification guide for outdoor electrical distribution boxes covering NEC Article 312 requirements, NEMA ratings, sizing calculations, and selection criteria for commercial and ...



For temperature rise test, a distribution box with all assembly of Isolator / Porcelain cutouts shall be kept in an enclosure such that the temperature outside the box shall be maintained at 50 ° C.



Our distribution boxes are perfect for industrial environments, catering to automation, robotics, and processing facilities. They provide cost-effective solutions through automated dispensing and ...



Unique box wrapper profile developed using latest technologies and simulation software ensures the strongest resistance to high crushing forces. This profile helps in preventing the twisting of the box ...



The single -phase distribution box is designed to accept incoming conductors with a maximum size of 120mm² and 3 service cables of up to 35mm². Will suit CNE or SNE type cables.

Contact Us

For more information, pricing, or custom energy solutions, please contact us:

Website: <https://gdroofing.co.za>

Email: sales@gdroofing.co.za

Phone: +27 72 418 9365

Address: 22 Electron Avenue, Isando, Johannesburg, 1600, South Africa

This document is for informational purposes only. Specifications subject to change without notice.

