

## Distribution Box Identification Tube



### Overview

This comprehensive guide will provide you with step-by-step instructions and valuable tips to help you find your drain field distribution box with ease. Good labeling of breakers is very important. They help you turn off the right. The distribution box (or D-box) is responsible for evenly dispersing wastewater from the septic tank into multiple drain field lines. When it's working properly, it balances the flow so no single trench gets overloaded. If the conduit size is not given on the drawings, the conduit shall be sized in accordance with NEC based on the number of conductors enclosed plus a parity-sized. Maintaining a septic system is crucial for the health and longevity of your property. However, locating this box can be a daunting task. While electrical labelling is most importantly about safety, it should also be convenient, professional, time-saving, making your life easier and leave a lasting impression with your customers. In fact, it is so important that an entire section of the Requirements for Electrical Installations, IET.

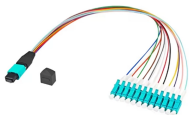
## Distribution Box Identification Tube



Locate your distribution box by following the septic tank outlet, checking for access lids, and using property records for safe and accurate identification.



MDB Distribution Box Features For material take-off from silos, surge bins, drying hoppers, etc. Modular stacking design allows expansion. and plain bottom plate. All feed tubes are price



This box serves as the central hub for distributing wastewater throughout the drain field. Finding it can be a daunting task, but with the right knowledge and tools, it's a manageable endeavor.



This comprehensive guide will explain what they are, how they work, why proper distribution is important, signs of a failing D-box, and steps for inspection, maintenance, and ...



The immediate benefit to the customer is easy identification of well-labelled switchgear, that makes circuit isolation and protection both quick and accurate. Historically label creation has been a time ...



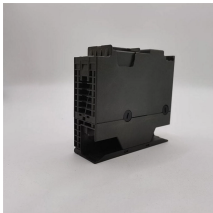
Symbols of Electrical Junction Boxes. They are accessible boxes where the splices and connections of the electrical wiring are located.



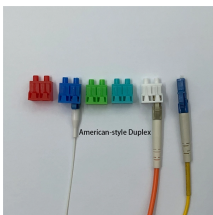
Understand your distribution box labels to identify circuits, improve safety, and troubleshoot electrical issues in your home with confidence.



The distribution box (or D-box) is responsible for evenly dispersing wastewater from the septic tank into multiple drain field lines. When it's working properly, it balances the flow so no...



Locating your drain field distribution box is a crucial step in maintaining your septic system. By following the steps outlined in this guide, you can find the box with confidence.



2.1 Conduit identification labels shall be represented where conduits penetrate electrical equipment including, but not limited to, switchgear, switchboards, panelboards, transfer switches, ...

## Contact Us

For more information, pricing, or custom energy solutions, please contact us:

Website: <https://gdroofing.co.za>

Email: [sales@gdroofing.co.za](mailto:sales@gdroofing.co.za)

Phone: +27 72 418 9365

Address: 22 Electron Avenue, Isando, Johannesburg, 1600, South Africa

This document is for informational purposes only. Specifications subject to change without notice.

