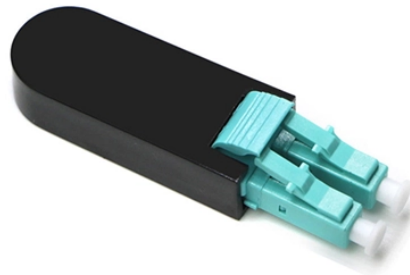


Distribution Box Manufacturing Workshop Regulations



Overview

These rules guide you to use proper labeling, provide safe maintenance access, and reduce risks with the right personal protective equipment. The table below shows why these standards matter: Adherence to National Electrical Code ensures minimum safety standards. Employers shall conspicuously post maximum safe load limits of floors within buildings and structures, in pounds per square foot, in all storage areas, except when the storage area is on a floor or slab on grade. Posting is not required for storage areas in all single-family residential structures. The distribution board functions as the absolute central nervous system of any modern electrical installation, managing the flow of power safely throughout the entire building infrastructure. Key requirements include temperature rise tests 2, IP rating verification 3, short-circuit withstand testing 4, detailed technical files, and compliance with.

Distribution Box Manufacturing Workshop Regulations



Learn how to choose the right distribution box for your home or workshop. Discover sizing rules, component selection, and strict electrical safety standards.



All materials stored in tiers shall be stacked, racked, blocked, interlocked, or otherwise secured to prevent sliding, falling or collapse. The weight of stored materials on floors within buildings and ...



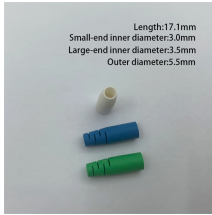
It tells you how to design, test, and document your distribution boxes. Many contracts and regulations require you to follow IEC 61439, so you must know what it covers.



This Guide sets the standards for planning, programming, and designing the work needed to upgrade our existing supply facilities and build new ones. As AMC modernizes these facilities, it will reap big ...



It tells you how to design, test, and document your distribution boxes. Many contracts and regulations require you to follow IEC 61439, so you must ...



Explore a searchable database of US construction and building code. Code regulations are consolidated by state and city for easier navigation.



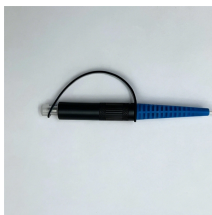
Distribution boxes must comply with UL 50 (enclosures) and UL 508A (industrial control panels) standards. These standards are rigorous about short-circuit current ratings (SCCR), proper ...



Provide high-density polyethylene drop or distribution box with holes punched suitable to receive locking seals. The box shall be strong, non-corrosive, lightweight, and easily installed. The box shall be of ...



Explore the essential functions, types, safety features, and technological advances of distribution boxes for efficient electrical power distribution.



Compliance with safety regulations goes beyond ticking boxes; it requires a deep understanding of guidelines and protocols. We'll review the key warehouse safety regulations to help ...



§ 57.12006 Distribution boxes. Distribution boxes shall be provided with a disconnecting device for each branch circuit.

Contact Us

For more information, pricing, or custom energy solutions, please contact us:

Website: <https://gdroofing.co.za>

Email: sales@gdroofing.co.za

Phone: +27 72 418 9365

Address: 22 Electron Avenue, Isando, Johannesburg, 1600, South Africa

This document is for informational purposes only. Specifications subject to change without notice.

