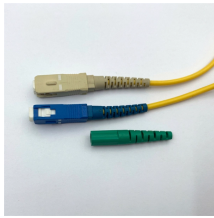


Distribution Network Automation FTU Pole-Mounted Distribution Box



Distribution Network Automation FTU Pole-Mounted Distribution Bo



One bay unit includes circuit breaker, disconnector(s), measuring transformers and the local control and interface cabinet in one transportation unit. The unit has been factory-assembled and tested, offering ...



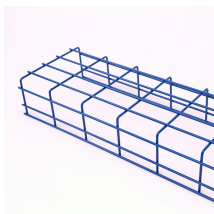
This Distribution Automation (DA) architecture is a fundamental part of any Cisco network, providing enhanced, end-to-end security from the control center all the way to the edge of the distribution network.



This sophisticated unit, mounted on utility poles, integrates seamlessly into existing power distribution networks to provide real-time monitoring, control, and automation capabilities.



CYG provides a comprehensive series of products covering the entire distribution automation chain. Based on the primary grid framework and equipment, with the distribution automation system at its ...



The Feeder Terminal Unit (FTU) is specifically developed for the monitoring and protection of pole-mounted switches within 10kV distribution networks. It offers comprehensive fault detection, ...



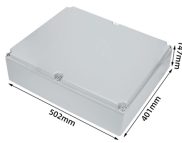
Our 11 kV Load Break Switch, 15 kV Automatic Circuit Recloser, feeder terminal units, and other pole mounted circuit breakers are always committed to providing customers with stable and reliable ...



Application: This segment covers the diverse range of applications for DTUs and FTUs, including substation automation, pole-mounted switch control, distribution transformer monitoring, ...



It can be fixed in a hanging box or built-in, adapting well to various natural conditions with high and low temperatures, high humidity and much dust. The device is highly universal, easy to install, run and ...



The following examples show how FTU, DTU and TTU hardware blocks come together in real distribution automation scenarios, and why reliable power, communication and security functions ...



Our latest developed F-FTU200 series products can be completed to various pole mounted switches, including Automatic Circuit Recloser (ACR), Circuit Breaker (CB), and can provide a variety of ...

Contact Us

For more information, pricing, or custom energy solutions, please contact us:

Website: <https://gdroofing.co.za>

Email: sales@gdroofing.co.za

Phone: +27 72 418 9365

Address: 22 Electron Avenue, Isando, Johannesburg, 1600, South Africa

This document is for informational purposes only. Specifications subject to change without notice.

