

Distributor Optoelectronic Hybrid Cable PAM4



Distributor Optoelectronic Hybrid Cable PAM4



Last updated on Apr 29, 2026.



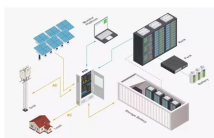
The Active Optical Cables support 400G PAM4 applications and are available in standard lengths up to 100 meters including 1:2, 1:4 and 1:8 breakouts.



AOC was developed as a replacement for the DAC (Direct Attach Copper) cables and is primarily used in data centers and other high-performance computing environments. Compared to typical copper ...



Active Copper Cable ACC2 assemblies offer longer lengths while still providing a low-power option for these interconnects. 400G PAM4 OSFP DAC applications are available in standard lengths up to 3 ...



MaxLinear's highly integrated PAM4 DSPs offer superior link-margin performance and low power to enable 100G, 400G, 800G, and 1.6T optical interconnects inside the data center.



QEPT 200G PAM4 is a perfect solution for demanding applications where real-estate and heat dissipation is an issue, whilst allowing the usage of widespread 850nm multi-mode technologies.



Operating at 224Gb/s PAM4 signaling per channel, this connector features an optimized footprint ensuring superior signal integrity, with less than 2dB of loss at 53GHz



These 0.635 mm pitch high-density, high-speed signal/power arrays achieve 64 Gbps PAM4 speeds and feature rotated power blades for improved performance and simplified breakout region (BOR).



The Marvell® PAM4 optical DSP portfolio addresses the critical the need for high-bandwidth optical interconnects to power AI infrastructure. Marvell leads the pluggable module ecosystem with low ...



USource QSFP-DD passive copper cable assembly feature eight differential copper pairs, providing four data transmission channels at speeds up to 56Gbps (PAM4) per channel, and meets 400G Ethernet ...

Contact Us

For more information, pricing, or custom energy solutions, please contact us:

Website: <https://gdroofing.co.za>

Email: sales@gdroofing.co.za

Phone: +27 72 418 9365

Address: 22 Electron Avenue, Isando, Johannesburg, 1600, South Africa

This document is for informational purposes only. Specifications subject to change without notice.

