

## Does the distribution box need to be suspended overhead



### Overview

Switchboards and gear rated over 1,200 amps and over 6 feet wide require an exit at each end, or a doubling of the required front working space, so that a person will not be trapped behind arcing electrical equipment. But having an entire overhead power distribution system, like Suspended AMAXX, can take these benefits even further. Here's what you need to know: Power Distribution Systems Versus Power Drops Traditional overhead power drops consist of one individual cord and one individual connector; multiple. NFPA 70E, Standard for Electrical Safety in the Workplace, provides guidance in determining the severity of potential exposure, planning safe work practices including establishing an electrically safe work condition, arc flash labeling, and selecting personal protective equipment. In some cases, there will be a name plate on the electrical equipment that states the clear space requirements. Learn more in our Inspecting Commercial Electrical Systems Online Course. In the past, "dedicated equipment space" has only been required for four types of equipment: Dedicated equipment space is not to be confused with working space. Dedicated equipment space is for the equipment so that there is ample room for installing conduits, cables, cable trays and related wiring. The Olson

suspended units are a range of service products allowing overhead power distribution and compressed air. The range is split into two variants, one supplied with a fixed chain and.

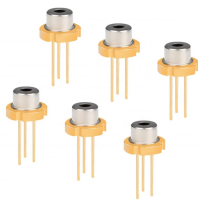
## Does the distribution box need to be suspended overhead



DRESS THE MAJORITY OF CONSTRUCTION ISSUES. IT IS IMPERATIVE TO MAINTAIN STANDARDIZATION, AND THAT COMPLETED JOB ORDERS REFLECT ANY CHANGES ON THE ...



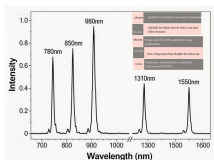
All MEP distribution systems shall be supported for gravity loads and braced for seismic loads in all directions (lateral, longitudinal and vertical) in accordance with the CBC and this IR.



Where installed outdoors, the box shall be of weatherproof construction and mounted so that the bottom of the enclosure is not less than 152 mm (6 in.) above the ground;



The Olson suspended units are a range of service products allowing overhead power distribution and compressed air. Ideal for use in workshops, factories, or garages and they have also been specified ...



It is unacceptable to be subjected to additional dangers by working around bicycles, boxes, crates, appliances, and other impediments. Don't work in such an area until these items are removed.



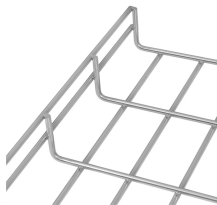
In the past, “dedicated equipment space” has only been required for four types of equipment: Dedicated equipment space is not to be confused with working space. Dedicated equipment space is for the ...



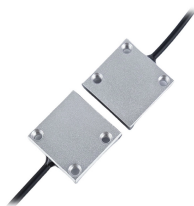
There are different requirements for a single row of equipment, electrical rooms, rack rows, and foreign systems. In some cases, there will be a name plate on the electrical equipment that states the clear ...



Electrical boxes must provide sufficient space for conductors and devices to prevent overheating and insulation damage. Overcrowding restricts heat dissipation and increases fire risk. ...



Conductive fences around substations shall be grounded. When a substation fence is expanded or a section is removed, fence sections shall be isolated, grounded, or bonded as necessary to protect ...



The benefits of an overhead power supply source are obvious. But having an entire overhead power distribution system, like Suspended AMAXX, can take these benefits even further.

## Contact Us

For more information, pricing, or custom energy solutions, please contact us:

Website: <https://gdroofing.co.za>

Email: [sales@gdroofing.co.za](mailto:sales@gdroofing.co.za)

Phone: +27 72 418 9365

Address: 22 Electron Avenue, Isando, Johannesburg, 1600, South Africa

This document is for informational purposes only. Specifications subject to change without notice.

