

# Does the national standard cable tray include fireproofing



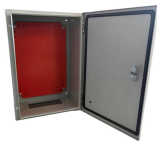
## Overview

fireproof cable tray adopts the national fireproof cable standard. The fire prevention period requires a thickness of not less than 1mm, and the fire resistance limit needs to be greater than 30min, which is the standard for the fire protection effect of. The proper coating and acceptance of fireproof cable trays are essential for long-term performance and safety. Route Planning and Layout Principles Coordinate with Building Structure: Cable tray routing should align with architectural design, avoiding unnecessary. 1. 1\* This standard shall cover life safety from fire and fire protection requirements for fixed guideway transit and passenger rail systems, including, but not limited to, stations, trainways, emergency ventilation systems, vehicles, emergency procedures, communications, and control systems. • Moisture cannot accumulate in ladder cable trays and be piped into electrical equipment as happens in conduit systems. The mechanical and electrical characteristics, tests, certifications, overall quality management, recommendations mentioned in this technical guide only apply to our own cable management ranges and cannot under any circumstances be transpos the enclosure.

## Does the national standard cable tray include fireproofing



1.01 SECTION INCLUDES Cable trays and accessories. Firestopping within (not around) cable trays.



Cable tray installation must comply with specific technical standards to ensure electrical safety, system reliability, and long-term maintainability. This document ...



In accordance with its continuous improvement policy, Legrand reserves the right to change the specifications and illustrations without notice. All illustrations, descriptions and technical information ...



Solid bottom steel cable trays with solid covers and wrap around cover clamps can be used to provide EMI/RFI shielding protection for sensitive circuits.



The cable tray is divided into internal flame retardant, external flame retardant and full flame retardant. The important part is the fireproof board.



A generic guideline developed by the Cable Tray Institute indicates that cable trays should not be filled in excess of 40-50% of the inside area of the tray or of the tray's maximum weight based on the cable ...



Cable tray installation must comply with specific technical standards to ensure electrical safety, system reliability, and long-term maintainability. This document outlines the key requirements for cable tray ...



This guide explains the critical steps in fireproof cable trays acceptance, covering coating processes, inspection standards, and more. By following these steps, you can enhance durability ...



Cable trays and busways at floor level or at slab penetrations shall have a waterstop no less than 50 mm in height. At slab penetrations, provide 20-30 mm of firestopping and install a fire ...



When a tray contains too many cables, the heat is not allowed to get out, which can destroy the wires or even catch fire.



The cable or raceway is a listed fire-resistive cable system. The cable or raceway is protected by a listed fire-rated assembly that has a minimum fire rating of 2 hours and contains only emergency circuits. ...

## Contact Us

For more information, pricing, or custom energy solutions, please contact us:

Website: <https://gdroofing.co.za>

Email: [sales@gdroofing.co.za](mailto:sales@gdroofing.co.za)

Phone: +27 72 418 9365

Address: 22 Electron Avenue, Isando, Johannesburg, 1600, South Africa

This document is for informational purposes only. Specifications subject to change without notice.

