

## Dual-mode optical module connection method



### Overview

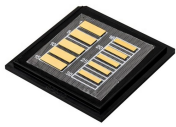
It uses WDM technology to realize the bidirectional transmission of optical signals on one optical fiber. Dual fiber modules use two fibers. They are easier to set up and give steady communication. Both transmitting and receiving need. Single fiber module also called BiDi transceiver or WDM module.



## Dual-mode optical module connection method



Multi-mode fibers have a larger core, allowing multiple light paths, suitable for short distances but prone to signal degradation over longer ranges.



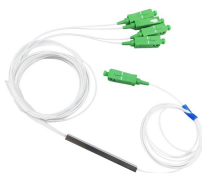
Dual fiber modules use two separate fibers: one for transmitting (TX) and one for receiving (RX). This is the most common setup and is widely ...



Media converters with dual SFP ports adapt two different types of fiber optic cabling, such as single mode and multimode. When used in this application, TechLogix media converters require two ...



Multi-mode fibers have a larger core, allowing multiple light paths, suitable for short distances but prone to signal degradation over longer ranges.



This paper provides a comprehensive review of mode coupling in multimode and multicore fibers, highlighting aspects of general validity and conducting an in-depth analysis of ...



Single fiber module also called BiDi transceiver or WDM module. It uses WDM technology to realize the bidirectional transmission of optical signals on one optical fiber.



In the realm of fiber optic communication, the choice between single-mode and multi-mode optical modules and fibers is critical for achieving efficient and reliable data ...



Know the key differences between Single and dual-fiber optical transceivers for efficient network deployment and optimization.



Short answer: Usually yes, you use them in pairs, but the "pair" can be a media converter on one end and a fiber switch (or SFP in a switch) on the ...



Dual fiber modules use two separate fibers: one for transmitting (TX) and one for receiving (RX). This is the most common setup and is widely supported in standard optical networking.



Short answer: Usually yes, you use them in pairs, but the "pair" can be a media converter on one end and a fiber switch (or SFP in a switch) on the other, as long as both sides speak the ...



The primary distinction between single-fiber and dual-fiber optical modules is evident in their connection methods. Firstly, a single-fiber optical module comprises only one fiber port, requiring the insertion of ...



Although both dual fiber SFP and simplex SFP modules are used to convert electrical signals to light signals, they differ in several ways, including transmission distance, fiber utilization, and use methods.



In the realm of fiber optic communication, the choice between single-mode and multi-mode optical modules and fibers is critical for achieving efficient and reliable data transmission.

## Contact Us

For more information, pricing, or custom energy solutions, please contact us:

Website: <https://gdroofing.co.za>

Email: [sales@gdroofing.co.za](mailto:sales@gdroofing.co.za)

Phone: +27 72 418 9365

Address: 22 Electron Avenue, Isando, Johannesburg, 1600, South Africa

This document is for informational purposes only. Specifications subject to change without notice.

