

# EPON equipment from Congo 800G

MTP MPO SC-Type Fiber Adapter



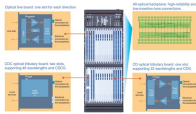
## Overview

6Wresearch actively monitors the Congo Passive Optical Network (PON) Equipment Market and publishes its comprehensive annual report, highlighting emerging trends, growth drivers, revenue analysis, and forecast outlook. A passive optical network (PON) is a fiber-optic telecommunications network that uses only unpowered devices to carry signals, as opposed to electronic equipment. In practice, PONs are typically used for the last mile between Internet service providers (ISP) and their customers. In this use, a PON. EPON module, defined by the IEEE 802.3ah standard in 2004, which can support the transmission rate of 1. EPON modules are divided into classes PX10 and PX20, with specific parameters as follows: With the. Congo Equipment has been the exclusive Caterpillar dealer since 2007, following a merger between Tractafric Equipment and Barloworld Equipment. From the Central Office's (CO) Optical Line Terminal (OLT, with SFP GEAPON.

## EPON equipment from Congo 800G



Explore Caterpillar industrial equipment and flexible rental solutions at Congo Equipment. Expertise, performance, and support for your projects.



Discover key PON module parameters for selecting the best GPON and EPON modules. Understand their impact on network performance and make ...



Because there is no single definition of "WDM-PON" equipment, various vendors claim to have released the "first" WDM-PON equipment, but there is no consensus on which product was the "first" WDM ...



EPON-Mentech possesses profound technical expertise and extensive industry experience in the field of transceivers, focusing on delivering excellent products and services to our customers.



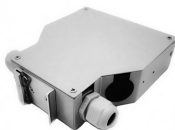
Shop high-quality Epon Equipment for reliable fiber optic networks. Wholesale prices and secure transactions. Perfect for telecom and wireless applications.



Discover what to look for in an EPON system, including types, key features, pricing, and top models. Make an informed decision with this complete buying guide.



Discover key PON module parameters for selecting the best GPON and EPON modules. Understand their impact on network performance and make informed choices.



In the process of FTTH deployment, OLT, and ONU equipment shall adopt optical modules not lower than px20 + (EPON) and class C + (GPON) levels, and the attenuation of the ...



Ethernet Passive Optical Networks (GEAPON or EPON) is the leading technology being used in FTTx (FTTH) deployments. PON is different than other optical network topologies in that it is a Point to ...



6Wresearch actively monitors the Congo Passive Optical Network (PON) Equipment Market and publishes its comprehensive annual report, highlighting emerging trends, growth drivers, revenue ...



Congo Passive Optical Network Equipment Market is expected to grow during 2024-2031

## Contact Us

For more information, pricing, or custom energy solutions, please contact us:

Website: <https://gdroofing.co.za>

Email: [sales@gdroofing.co.za](mailto:sales@gdroofing.co.za)

Phone: +27 72 418 9365

Address: 22 Electron Avenue, Isando, Johannesburg, 1600, South Africa

This document is for informational purposes only. Specifications subject to change without notice.

