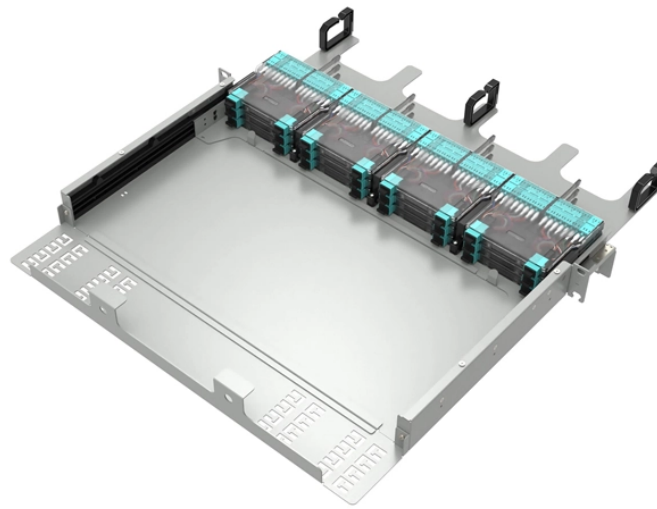


Elbows in cross-connection cable trays for strong and weak current cables



Overview

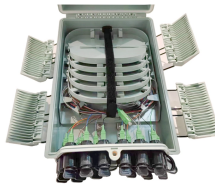
Cable tray elbows, tees, crosses, and reducers are essential fittings used to maintain the proper routing and support of electrical cables within a tray system. Elbows are directional changes, typically 45 deg or 90 deg, used to navigate corners horizontally or vertically. The main types of accessories are categorized by their function: Fittings change the path or size of the run, including Elbows (for horizontal or vertical direction changes), Tees and Crosses (for multi-directional junctions), and Reducers (to transition between different tray widths). Support. The aluminum I-beam design of ITray is perfect for industrial installations with large diameter cables in long span situations, minimizing total tray width and creating a smooth transition between straight sections and fittings. A structural offset in the sidewall creates strong, mid-span splices. The work covered under this section consists of the furnishing of all necessary labor, supervision, materials, equipment, tests and services to install complete cable tray systems as shown on the drawings. Cable tray systems are defined to include, but are not limited to straight sections of.

Ensure your cable tray solution is designed for your application, with our vast range of ladder tray fittings. These elbows are made from sturdy metal, ensuring long-lasting use and reliable protection against mechanical damage, corrosion, and.

Elbows in cross-connection cable trays for strong and weak current



The aluminum I-beam design of ITray is perfect for industrial installations with large diameter cables in long span situations, minimizing total tray width and creating a smooth transition between straight ...



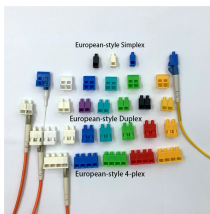
Cable trays shall be installed according to the latest revision of the NEC, NEMA VE 2, and manufacturer's installation instructions. Cable tray elbows shall be supported per NEMA VE 2 ...



Cable tray elbows, tees, crosses, and reducers are essential fittings used to maintain the proper routing and support of electrical cables within a tray system. Elbows are directional changes, ...



Metal elbows for cable trays are an essential component in electrical installations, ensuring safety, durability, and aesthetic appeal. They are an excellent choice for industrial, commercial, and ...



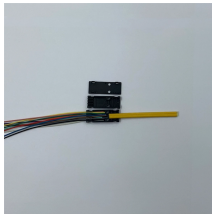
Supports vertical cables with multiple NEMA class tray options. Durable I-BEAM construction and added bracing improve cable management.



Specifies requirements for metal cable trays and associated fittings designed for use in accordance with the rules of Canadian Electrical Code, Part I and the National Electrical Code®



A. Test cable trays to ensure electrical continuity of bonding and grounding connections, and to demonstrate compliance with specified maximum grounding resistance.



These cable tray fittings and accessories are essential for the seamless installation of an integrated cable management system, allowing for functions such as widening, heightening, connecting, and ...



Discover our 90° Vertical Elbow for cable tray systems. Contact us today for availabilities and receive a quote. Fast shipping guaranteed.



NEMA VE 2-2018 Cable Tray Installation Guidelines. Learn best practices for cable tray installation, support, and accessories.

Contact Us

For more information, pricing, or custom energy solutions, please contact us:

Website: <https://gdroofing.co.za>

Email: sales@gdroofing.co.za

Phone: +27 72 418 9365

Address: 22 Electron Avenue, Isando, Johannesburg, 1600, South Africa

This document is for informational purposes only. Specifications subject to change without notice.

