

# **Electrical Diagram of Fiber Optic Sensor**



## Electrical Diagram of Fiber Optic Sensor



What is a Fiber Optic Sensor? A sensor that uses optical fiber as a detecting element is known as a fiber optic sensor. In remote sensing, fibers play a key role but based on the ...



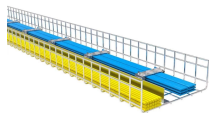
The entire fiber optic transmitter circuit diagram can be seen below. You will find many integrated circuits suitable to work like VCO, along with many other configurations built using discrete ...



Additional optical fibers have been produced, including plastic optical fibers, glass optical fibers with plastic claddings, photonic crystal (holey) optical fibers, doped active optical fibers, and others.



o its chemically inert nature. FIBER OPTIC SENSOR PRINCIPLES: Fiber optic sensors consist of an optical source (LEDs, Lasers, Laser diodes etc.) optical fiber, sensing element (transducer), optical ...



There are several types of fiber optic sensors including intrinsic and extrinsic sensors based on location, and intensity, phase, and polarization-based sensors based on ...



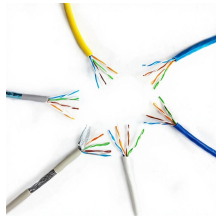
Learn all about various sensors—including fiber optic sensors, photoelectric sensors, laser sensors, and contact sensors—with detailed information on measurement principles and applications.



In this section we will briefly discuss the ways in which optical fiber Bragg grating sensors can be individually interrogated and collectively multiplexed in order to be able to perform multi-point sensing.



Fiber-optic sensors are used in electrical switchgear to transmit light from an electrical arc flash to a digital protective relay to enable fast tripping of a breaker to reduce the energy in the arc blast.



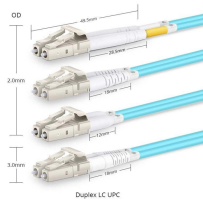
Sensor Wiring Diagrams and Specifications If you have problems viewing a PDF document or wish to save any PDF to your computer for future use, right-click on the link to the document, select "Save ..."



Distributed fiber optic sensors are widely used for variety of applications such as structural health monitoring, perimeter and pipeline security, temperature, pressure, strain, and vibration...



What Is a Fiber Sensor? A Fiber Sensor is a type of Photoelectric Sensor that enables detection of objects in narrow locations by transmitting light from a Fiber Amplifier Unit with a Fiber Unit.



photoelectric sensors including fiber sensors, displacement sensors, vision sensors, LED lightings for machine vision, non-contact thermometers and accessories for ...

## Contact Us

For more information, pricing, or custom energy solutions, please contact us:

Website: <https://gdroofing.co.za>

Email: [sales@gdroofing.co.za](mailto:sales@gdroofing.co.za)

Phone: +27 72 418 9365

Address: 22 Electron Avenue, Isando, Johannesburg, 1600, South Africa

This document is for informational purposes only. Specifications subject to change without notice.

