

## Electrical Distribution Box Engineering Contact Form



### Overview

Please complete this form for each building to be served by EWEB. This form is for three phase &. The ABB Contact Center is an easy-to-use, single point of contact for all sales, service and internal support teams at ABB. When you require a quotation for ABB Products. At Segue, we have been designing and fabricating custom Control Panels/Boxes and Power Distribution Units (PDUs) for many industries and applications for more than 30 years. From prototype to mass production, we support OEM metal enclosure customization with drawings. com has been updated to serve our three go-forward companies.



## Electrical Distribution Box Engineering Contact Form



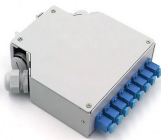
Our Contact Center is available via phone, e-mail, or chat. You can also submit a web inquiry using the web contact form. Enquiries outside business hours will be answered the next working day. ...



Additional resources for contractors, including a demolition request form, letter of availability, important information about underground electric service and more.



Send us your technical drawing or design requirements. We accept PDF, DWG, STEP formats. Our engineering team reviews your drawing and provides a detailed quote with pricing and lead time. ...



Contact a customer service branch office or engineering office to determine the current application fees. See page 1-4 for office locations and telephone numbers.



GE has been updated to serve our three go-forward companies.



At Segue, we have been designing and fabricating custom Control Panels/Boxes and Power Distribution Units (PDUs) for many industries and applications for more than 30 years. Our engineering team can ...



At Segue, we have been designing and fabricating custom Control Panels/Boxes ...



This form must be completed by the operator and company user before entering the equipment to be operated in the site project area, and at any time of setting location.



Please complete this form for each building to be served by EWEB. Return this form with a facilities equipment list, site plan and design agreement to Electric Distribution Engineering.



Contact AVRGT for Design and Manufacturing Support. Custom electronic distribution boxes and wiring assemblies. Scalable OEM manufacturing with AVRGT.



From decentralized energy, signal and data distribution to distribution boxes for smart buildings, we offer the right solution. We mount any electronics in the manifolds! All options are open here, and the ...

## Contact Us

For more information, pricing, or custom energy solutions, please contact us:

Website: <https://gdroofing.co.za>

Email: [sales@gdroofing.co.za](mailto:sales@gdroofing.co.za)

Phone: +27 72 418 9365

Address: 22 Electron Avenue, Isando, Johannesburg, 1600, South Africa

This document is for informational purposes only. Specifications subject to change without notice.

