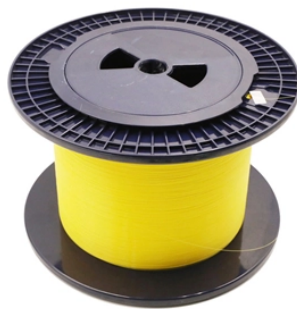


## Electrical Distribution Box Installation Regulations



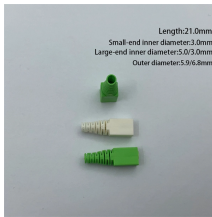
### Overview

Comply with standards: Follow NEC, IEC, or local codes. Use UL/CE-certified parts and record installation details for future inspections. Schedule regular maintenance and inspections to ensure long-term reliability. The conductors and equipment required or permitted by this subpart shall be acceptable only if approved, as defined in § 1910. Electric equipment shall be free from recognized hazards that are likely to cause death or serious. Choose the right box based on environment (indoor/outdoor), load capacity, and durability. Practice good wiring: secure. Essential Guidelines for Safe and Compliant Electrical Systems Think of your home's distribution box as the Grand Central Station of your electrical system.

## Electrical Distribution Box Installation Regulations



Proper installation of a distribution box requires careful planning and adherence to electrical codes. While major installations should always involve qualified electricians, understanding ...



This article provides a detailed overview of the entire process of installing a distribution box, from pre-installation preparation to post-installation maintenance, and summarizes common ...



This document represents the minimum requirements and specifications for the installation of an electrical underground residential distribution system to be transferred to Oncor Electric Delivery ...



Learn how to install a distribution box safely and correctly. Covers wiring, placement, standards, and expert tips for a compliant setup.



First of all, you need to have a simple understanding of the definition of a distribution box, and make it clear which kind of distribution box you want to install. This is important to properly install it.



Electric equipment shall be installed in a neat and workmanlike manner. Unused openings in boxes, raceways, auxiliary gutters, cabinets, equipment cases, or housings shall be effectively closed to ...



Design requirements for low voltage distribution boxes cover NEC, IEC, and safety standards to ensure reliable, compliant electrical installations.



The NEC code of junction box keeps your electrical work safe and reliable. You must use approved materials, choose the right size box, and make sure you ground everything correctly.



Code Change Summary: New requirements were added about the listing of power distribution blocks. Power distribution blocks are most commonly used in metal wireways (covered in Article 376) but ...



The latest NEC updates prioritize adaptive solutions for modern energy demands. With homes now packing solar arrays, EV chargers, and smart-home systems, distribution boxes work harder than ...



Design requirements for low voltage distribution boxes cover NEC, IEC, and safety standards to ensure reliable, compliant electrical installations.



Introduction  
Understanding The Components of A Distribution Box  
Selecting The Right Distribution Box  
Site Preparation and Location Requirements  
Electrical Connections and Wiring  
Compliance with Standards and Regulations  
Conclusion  
Proper installation of a distribution box isn't just a technical requirement. It's a vital step in ensuring the safety and efficiency of your entire electrical system. Following best practices reduces the risk of electrical fires, power outages, and other hazards, protecting your property and keeping everyone safe. If you're looking for a reliable,...  
See more on eabel  
Published: Feb 7, 2025  
coloriagroup

## Contact Us

For more information, pricing, or custom energy solutions, please contact us:

Website: <https://gdroofing.co.za>

Email: [sales@gdroofing.co.za](mailto:sales@gdroofing.co.za)

Phone: +27 72 418 9365

Address: 22 Electron Avenue, Isando, Johannesburg, 1600, South Africa

This document is for informational purposes only. Specifications subject to change without notice.

