

Electrician connects cables to distribution box



Electrician connects cables to distribution box



Hey, in this article we are going to see the Single Phase Distribution Box Wiring Diagram and Connection Procedure. A distribution board or distribution box is where the main power supply is ...



The safe and correct installation of cable distribution boxes is crucial for the stable operation of electrical systems and the prevention of electrical accidents.



Single phase DB box wiring involves connecting the live, neutral, and earth wires to their respective terminals in the distribution board. It's essential for distributing power safely in a single ...



In this video, we'll walk you through the process of wiring a home distribution box with a detailed connection diagram. Whether you're an electrician or a DIY enthusiast, this guide will help you ...



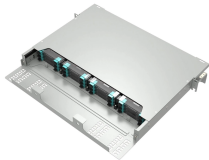
Distribution boxes are used for power distribution, circuit protection and cable management, while junction boxes are only used for wire connection and branching.



METHOD STATEMENT FOR Electric panel and distribution box installation and termination - Free download as PDF File (.pdf), Text File (.txt) or read online for free. This document provides a method ...



Through the MCB phase lines are distributed to electrical wiring for lighting, fixed devices, and power distribution points. This type of arrangement is the commonly used method of distribution ...



Find out how to properly wire an electrical panel box with a comprehensive diagram and step-by-step instructions.



Here we are considering a Distribution Board with MCBs [Miniature Circuit Breakers] for power distribution. Installation work described here is according to British Standards [IEE Regulations and ...



Connecting wires to your home distribution box? See how electricians do it professionally! From selecting the right wire gauge to safely connecting the main ...

Contact Us

For more information, pricing, or custom energy solutions, please contact us:

Website: <https://gdroofing.co.za>

Email: sales@gdroofing.co.za

Phone: +27 72 418 9365

Address: 22 Electron Avenue, Isando, Johannesburg, 1600, South Africa

This document is for informational purposes only. Specifications subject to change without notice.

