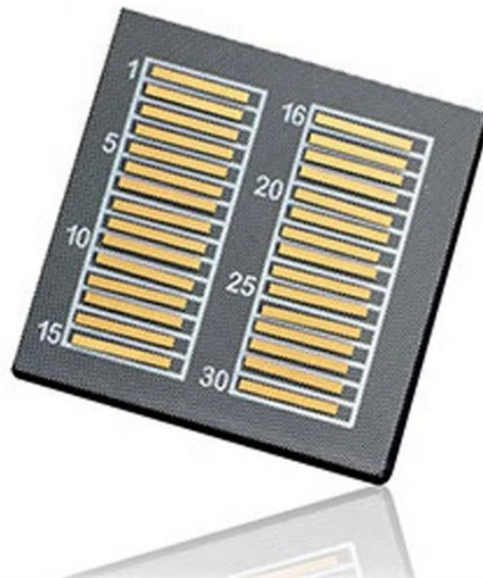


## Energy-saving cable tray color coding



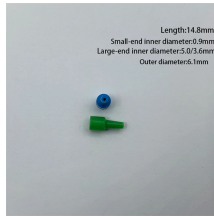
### Overview

Pair cables are Black, White and numbered. Find the tray cable color code to complete your next installation safely. Every foot of wire, every time. If you were to cut a cross-section of Kris-Tech wire and look at it head-on, you'd see a series of colored conductors arranged in a circle around the main conductor. Have A QUESTION?

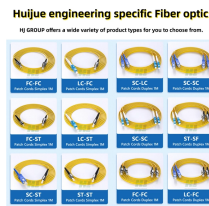
SEND US YOUR QUESTION I and industrial environments. Suitable for installation in cable trays, supported by messenger wire in open air, raceways, channels, conduits, and ducts.



## Energy-saving cable tray color coding



This document provides a color-coding guide for identifying different pipes, cable trays, trunking, conduits, and ducting for M& E (mechanical and electrical) services. There are 20 items listed with ...



Find the tray cable color code to complete your next installation safely. Need a custom color code produced? Contact us today.



Whether you need some tray cable color-coded to meet NEC guidelines or want it custom-colored to match your preferences, KrisTech can get the job done. If you have questions, fill out a ...



TRAY CABLE PVC Jacket PVC/Nylon Insulation 90°C  
- 600 Volt - UL Type TC-ER\* 14 AWG E-2 Color  
Code 05-03-2017



Learn the essential tray cable color codes to choose the right wire for your application, ensuring safety and compliance in all your electrical projects.



Pair cables are Black, White and numbered. Triad cables are Black, White, Red and numbered.



Learn cable color codes with global standards, safety rules, and practical applications. Improve wiring safety, installation, and maintenance efficiency easily.



Adopting a cable tray colour code system not only supports operational efficiency but also saves time and resources in managing electrical networks. It is an essential practice for reliable ...



channels, conduits, and ducts. Approved for direct burial, joist pull applications, and outdoors in cable trays where sunlight resistance is required. Also, may be installed in wet or dry locations or in areas



\*Note: Colors repeat after 21 conductors. Have A QUESTION? SEND US YOUR QUESTION.

## Contact Us

For more information, pricing, or custom energy solutions, please contact us:

Website: <https://gdroofing.co.za>

Email: [sales@gdroofing.co.za](mailto:sales@gdroofing.co.za)

Phone: +27 72 418 9365

Address: 22 Electron Avenue, Isando, Johannesburg, 1600, South Africa

This document is for informational purposes only. Specifications subject to change without notice.

