

## Equipment for testing the quality of laser diodes



## Equipment for testing the quality of laser diodes



ST-LDC systems are fully configurable, all-in-one laser diode and LED characterization devices for industries and R&D laboratories. They're designed to measure and analyze all major ...



The ideal laser diode testing system would assess all possibly relevant characteristics with high accuracy and perfect reliability within a short time, and this with high convenience and at a low cost, ...



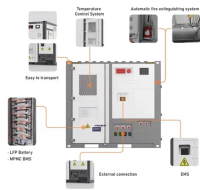
This laser diode reliability test system has been specially designed for the qualification and test of fiber-coupled devices with the maximum of internal and external measurement flexibility.



Chroma 58605 is a high density, multi-function, and temperature-controlled module based system for laser diode burn-in and lifetime tests. Each module has up to 128 SMU channels which can source ...



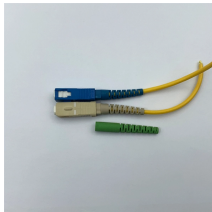
The PRT-LASER provides low-cost, high-performance accelerated aging, burn-in testing, and qualification testing for laser diode reliability. It uses precise control, allowing the user to test up to ...



Explore 28 top manufacturers and suppliers of Laser Diode Test Equipment in our comprehensive photonics buyers' guide.



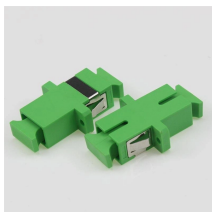
Laser diodes can be optically characterized in detail with the appropriate LIV test equipment - additionally consisting of integrating spheres, photodiodes, source-measure-units (SMUs) and ...



As laser diode applications expand across industries—from telecommunications to medical devices—the need for precise testing systems intensifies. The LIV test system, which ...



The ideal laser diode testing system would assess all possibly relevant characteristics with high accuracy and perfect reliability within a short time, and ...



Understanding how to properly test a laser diode is crucial for troubleshooting malfunctions, ensuring optimal performance, and preventing potential damage. Whether you're a ...

## Contact Us

For more information, pricing, or custom energy solutions, please contact us:

Website: <https://gdroofing.co.za>

Email: [sales@gdroofing.co.za](mailto:sales@gdroofing.co.za)

Phone: +27 72 418 9365

Address: 22 Electron Avenue, Isando, Johannesburg, 1600, South Africa

This document is for informational purposes only. Specifications subject to change without notice.

