

Estonian Weaknesses in Bridge Structures



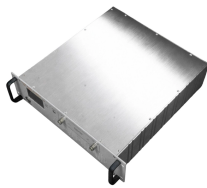
Overview

In this paper the uncertainty in condition assessment based on most common assessment methods, visual inspection and non-destructive testing, is investigated. MISSION: We plan and ensure safe, smart and environmentally friendly mobility in Estonia. Valge 4/1, Tallinn 11413 (There is no customer service at. For those still curious, here's the answer — this was the world's first test of using cosmic radiation, specifically muons, to assess the condition of a bridge open to traffic. "These particles are born in the atmosphere, exist for just 2. For decision-making the averaged or estimated value is suitable, but if the basis of a decision is only a subjective visual inspection, then. The city of Tallinn will begin a comprehensive reconstruction of the deteriorating Pallasti Bridge in 2027, a project prompted by extensive structural damage that aims to significantly improve safety and accessibility for all users on the vital Laagna Road. — Tallinn plans to commence a major.

Estonian Weaknesses in Bridge Structures



Estonian deep tech company GScan was awarded the contract for a project initiated by the Estonian Government Office. The project aimed to develop experimental methods for assessing the ...



Attention is paid to the condition assessment of bridges in Estonian national roads and collected data, which plays an important role in the selection of correct statistical technique and ...



In Estonia, like in many countries, bridge management is based on inventory records and condition information. The main emphasis of this investigation is on improving the regular condition...



We have experience in several projects in the field of testing and analysing the bearing capacity of an existing bridge. We can answer the question: „Is the bridge safe to surpass with given vehicle?“



To investigate the errors in both evaluations, benchmarking tests were carried out in Estonia within two groups, a group of experienced inspectors and a group of unexperienced students, to show how the ...



The city of Tallinn will begin a comprehensive reconstruction of the deteriorating Pallasti Bridge in 2027, a project prompted by extensive structural damage that aims to significantly improve ...



This paper summarizes the results of muon tomography measurements done in United Kingdom and Estonia, discussing the outcomes from data quality and measurement efficiency perspective with ...



In Estonia, like in many countries, bridge management is based on inventory records and condition information. The main emphasis of this investigation is on ...



Design error, construction mistakes, hydraulic, collision and overload are the top 5 leading causes of bridge failures. It is critical for bridges to have sufficient redundancy and capacity ...



Using cosmic radiation and artificial intelligence, the technology aims to assess the technical condition of bridges without the need for destructive testing. Some drivers crossing the ...



The Government Office held a competition to develop experimental methods for assessing the functionality and structural condition of existing bridges. As a result, the contract for ...



Using cosmic radiation and artificial intelligence, the technology ...

Contact Us

For more information, pricing, or custom energy solutions, please contact us:

Website: <https://gdroofing.co.za>

Email: sales@gdroofing.co.za

Phone: +27 72 418 9365

Address: 22 Electron Avenue, Isando, Johannesburg, 1600, South Africa

This document is for informational purposes only. Specifications subject to change without notice.

