

Ethiopia Cold Aisle Cabinet Design Drawings



Ethiopia Cold Aisle Cabinet Design Drawings



An aisle containment system is designed to be installed without the assistance of contractors or HVAC specialists. The components are organized into modular kits and come with assembly hardware for ...



Are you interested in creating the most energy efficient design for your Data Center Server Room? Consider the Hot Aisle/Cold Aisle layout design.



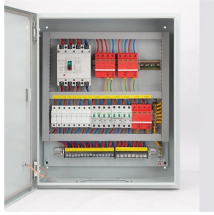
Aisle containment in the data center requires that cabinets are aligned in a hot aisle/cold aisle layout. Containment panels or strips create a partition to isolate either the server supply air (cold aisle ...



Some key points: - The drawings standardize design practices for all ERA design ...



Hot aisle containment is made from light duty aluminum profile and thermal insulation PC board, has better heat dissipation performance than cold aisle containment in high



The aisle containment system is a modular rowbased thermal containment solution, which separates cold and hot data center air streams to and from equipment. It manages airflow at the source, ...



Some key points: - The drawings standardize design practices for all ERA design works and provide guidance for structural design. - They were developed based on international standards adapted for ...



Find out how to improve your data center infrastructure efficiency, using the cold aisle containment or hot aisle containment solutions from Vertiv.



All of the servers discussed in this guide are designed for rackmounting in cabinets or racks that comply with the EIA 310D standard. The terms cabinet and rack are sometimes used interchangeably, which ...



Spanning 250m2 with a 160m2 footprint, the design includes comprehensive architectural (AR), structural (ST), sanitary & plumbing (SN), and electrical (EL) plans.



Depending on your facility's layout, Armstrong Aisle Containment Solutions offer both Hot Aisle Containment (HAC) and Cold Aisle Containment (CAC) systems to suit new builds or retrofit ...

Contact Us

For more information, pricing, or custom energy solutions, please contact us:

Website: <https://gdroofing.co.za>

Email: sales@gdroofing.co.za

Phone: +27 72 418 9365

Address: 22 Electron Avenue, Isando, Johannesburg, 1600, South Africa

This document is for informational purposes only. Specifications subject to change without notice.

