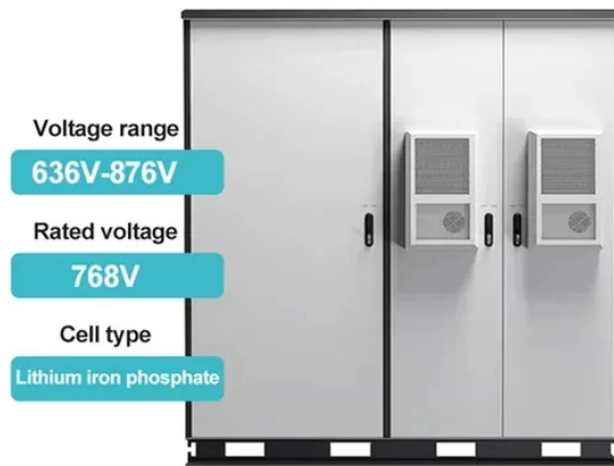


## Explosion-proof plug for secondary distribution box



### Overview

Choose from our selection of hazardous location electrical plugs in a wide range of styles and sizes. In stock and ready to ship.



## Explosion-proof plug for secondary distribution box



Discover our selection of Hazardous Location/Explosion Proof products. Our product experts are here to assist you. Get in touch with our team now.



Explosion-Proof Receptacle, EFS Series, 20 Amp Explosion-Proof Straight Blade Receptacle. 20 Amps. 125V AC. EFS Series. NEMA 5-20R, 2-Wire, 3-Pole. 1-Gang, Spring Door Box. Malleable Iron. Hubs: ...



As a class 1 division 2 receptacle, SSP-P series explosion proof receptacle have increased safety glass reinforced plastic housing for both receptacle and plug and flame proof and damage protection for ...



Crouse-Hinds series PowerGard receptacles and back boxes meet and exceed your power needs with an easy-install, universal footprint suitable for rig maintenance, retrofits and new builds.



Innovative and versatile plugs and sockets from R. STAHL for hazardous areas: User friendly, safe without making compromises and suitable for worldwide use.



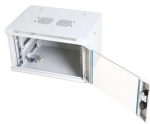
Choose from our selection of hazardous location electrical plugs, including over 6,700 products in a wide range of styles and sizes. Same and Next Day Delivery.



To make the connection, the ENP plug is fully inserted, and the receptacle face moved inward by pushing the plug forward. The plug is then rotated, closing the circuit. As rotation begins, the plug ...



Explosion-Proof Straight Blade Receptacle. 20 Amps. 125V AC. EFSR Series. NEMA 5-20R, 2-Wire, 3-Pole. 1-Gang, Spring Door. Malleable Iron. For use with EFD Type Outlet Boxes.



Price and other details may vary based on product size and color. Need help?



100 feet of SOOW cord terminated in a Class I, Div. I 15 Amp Twist Lock Plug.

## Contact Us

For more information, pricing, or custom energy solutions, please contact us:

Website: <https://gdroofing.co.za>

Email: [sales@gdroofing.co.za](mailto:sales@gdroofing.co.za)

Phone: +27 72 418 9365

Address: 22 Electron Avenue, Isando, Johannesburg, 1600, South Africa

This document is for informational purposes only. Specifications subject to change without notice.

