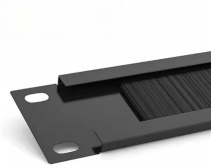


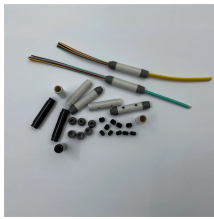
Fiber Optic Cable Junction Box with 4-Network Integration



Fiber Optic Cable Junction Box with 4-Network Integration



CommScope wall boxes offer efficient fiber connectivity. Easy installation, versatile sizes, and superior cable management.



It is of ABS+PC plastics with lock for security, multi-layer design saves space and easy for installation and maintenance. The fiber optic termination box integrates fiber splicing, splitting, distribution, ...



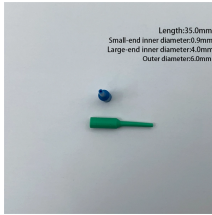
It is of ABS+PC plastics with lock for security, multi-layer design saves space and ...



This Fiber-to-the-Home (FTTH) fiber optic terminal wall-mounted junction box is constructed with advanced materials to ensure durability and lightweight construction. It offers simple wall mount ...



Fiber Distribution Box - FDB-8BJ FTTx Network Integration: The FDB-8BJ distribution box supports splicing, cable fixing, and passive component integration for FTTx projects, ensuring efficient fiber ...



The GZR Series 19" Rack-mounted Terminal Box (Rail-based) is a functional component for optical fibre distribution frames or network integrated cabinets, offering fibre splicing, distribution, and tray storage.



Fiber Optic Wall Mount Box with LC Couplers for Single Mode & Multimode Fiber Optic Cable. | Fiber Box Enclosure for MPOE's, Network Rooms, and IDF Rooms. (LC 6 Strand OS1/OS2)



The HTB8007 4 Fibers Indoor FTTH Fiber Terminal Box is a ...



These enclosures are designed to house your fiber optic connectors, providing a neat and organized solution for your fiber optic network. We offer both Rack Mount Enclosures (ranging from 1U to 4U in ...



The HTB8007 4 Fibers Indoor FTTH Fiber Terminal Box is a compact fiber terminal solution designed for FTTx and FTTH applications. Known as an FTTH faceplate, this terminal box ...



Crafted with sturdy metal, this wall-mountable box guarantees durability and reliability for your network connections. Featuring 1 inlet, 4 outlet, it facilitates seamless connectivity, ensuring smooth data ...



This box integrates fiber splicing, splitting, distribution, storage, and cable connection into a single unit. With its total enclosed structure and strengthened ABS material, this distribution box offers ...

Contact Us

For more information, pricing, or custom energy solutions, please contact us:

Website: <https://gdroofing.co.za>

Email: sales@gdroofing.co.za

Phone: +27 72 418 9365

Address: 22 Electron Avenue, Isando, Johannesburg, 1600, South Africa

This document is for informational purposes only. Specifications subject to change without notice.

