

# Fiber Optic Cable Junction Well Management



## Overview

The four fundamental elements of fiber cable management – physical and environmental protection, circuit separation, cable routing paths with bend radius control, accessibility and identification – will be discussed in this paper, as well as new technologies and products developed. The four fundamental elements of fiber cable management – physical and environmental protection, circuit separation, cable routing paths with bend radius control, accessibility and identification – will be discussed in this paper, as well as new technologies and products developed. The four fundamental elements of fiber cable management – physical and environmental protection, circuit separation, cable routing paths with bend radius control, accessibility and identification – will be discussed in this paper, as well as new technologies and products developed in the last few. Digital tools, such as IQGeo's Fiber Network Management System, now offer smarter Fiber Optic Solutions for tracking, organizing, and maintaining networking infrastructure. Choose the right fiber optic cable type—single-mode for long distances and multi-mode for shorter runs—to match your network. Fiber Optic Splice Closure is designed to protect optical fibers from debris, dirt, dust, moisture and water. UnitekFiber. The

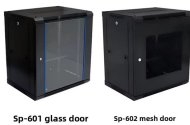
Fiber Optic Association, Inc. (FOA) was founded in 1995 to help develop the workforce to build the fiber optic networks to support a rapid expansion in communications and the Internet. FO-VC2 JOINT USE - VERICAL MIDSPAN CLEARANCES 48. APPENDIX A - COVER SHEET / TOC 52. Converged Plantwide Ethernet (CPwE) is the underlying architecture that provides standard network services for control and information disciplines, devices, and equipment found in modern industrial automation and control system (IACS) applications. CPwE is a collection of tested and validated.

## Fiber Optic Cable Junction Well Management



There are several services that maintain databases of the location of underground services that must be contacted before any digging occurs, but mapping these ...

Mesh door/glass door optional



Sp-601 glass door Sp-602 mesh door

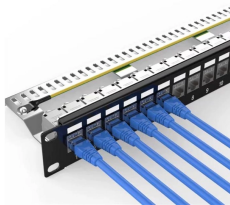
Support structures for fiber optic cable installations should be completed before the installation of the fiber optic cable itself. Outside plant structures should be installed in conformance with all permits ...



The ExpressFiber disposable fiber cable is an economic, low-risk fiber solution for cross-well monitoring that provides direct measurement of well interference.



Key features include the adoption of high-density fiber optics, modular cabling solutions, and automated cable management systems. These advancements promise remarkable advantages ...



In addition to cable selection, this application guide discusses the connectors, adapters, and patching required for a structured cable deployment. It also explains selection and best practice applications ...



There are several services that maintain databases of the location of underground services that must be contacted before any digging occurs, but mapping these should be done during the design phase ...



These monitoring systems help improve well productivity by identifying trends throughout the producing life of the well, and they rely on the robust design and long-term survivability of optical cables under ...



Fiber optical splice closure is widely used in communication, network systems, CATV cable TV, optical cable network systems, and so on. It is used for protective connection and fiber distribution between ...



The four fundamental elements of fiber cable management - physical and environmental protection, circuit separation, cable routing paths with bend radius control, accessibility and identification - will ...



A well-planned Fiber optic cable management system helps repair teams detect problems and keep the network operational more smoothly. A structured cabling system helps users add more network ...



This case study describes the surface testing method, logging and deployment options, analysis software, tool configuration, well log data, hardware examples and report.



Fiber optic cable sequential numbers are required at each pole location and vault wall. Sequential numbers will identify conduit length, and slack left in vaults and at poles.

## Contact Us

For more information, pricing, or custom energy solutions, please contact us:

Website: <https://gdroofing.co.za>

Email: [sales@gdroofing.co.za](mailto:sales@gdroofing.co.za)

Phone: +27 72 418 9365

Address: 22 Electron Avenue, Isando, Johannesburg, 1600, South Africa

This document is for informational purposes only. Specifications subject to change without notice.

