

## Fiber Optic Dual-Core Panel



## Fiber Optic Dual-Core Panel



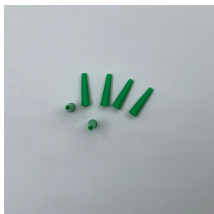
Our fiber patch panel offers options for flexible cable management and seamless integration with various cassettes and fiber optic accessories.



These high-density fiber patch panels allow a mix-and-match of e2XHD fiber and copper snap-in cassettes - up to 96 LC fibers or 48 copper ports per RU. Cassettes quickly snap in and pull out of ...



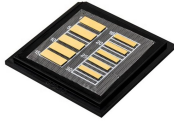
Learn how the Cisco® solution of panel and cable assemblies offers a versatile solution for any breakout from 4x10 Gbs to 400 Gbs native. The panels are compatible for Top of Rack (ToR), ...



FS offers FHD® FAPs and FHU™ 1U fiber patch panel with LC, SC, MTP®/MPO connectors in singlemode/multimode fiber to deploy medium for high-density fiber optic network applications.



Explore fiber patch panels for network infrastructure. Find LC, SC, and ST connector options for your telecommunications or data center needs.



Corning has a wide variety of hardware solutions to choose from to fit your cabling needs. Choose from racks, panels, modules, splice trays, ethernet fiber switches and other structured cabling components.



During this free webinar, we will discuss different fiber cables types, appropriate applications for each type, the mechanics of performing a Tier I test on fiber optic cable and calculating a loss limit for ...



Explore CommScope's efficient and scalable fiber splice panels designed for seamless connectivity. Accommodating LC, SC, and MTP/MPO connectors, these panels are ideal for data centers, ...



Find the compact Fiber Adapter Panels you're looking for. Whether you need pass-through connections, front or rear-loading access, or other modular options.



AFL's XFM-28 Dual Access Module Panel is designed to maximize module capacity via both front and rear access in just four rack units.

## Contact Us

For more information, pricing, or custom energy solutions, please contact us:

Website: <https://gdroofing.co.za>

Email: [sales@gdroofing.co.za](mailto:sales@gdroofing.co.za)

Phone: +27 72 418 9365

Address: 22 Electron Avenue, Isando, Johannesburg, 1600, South Africa

This document is for informational purposes only. Specifications subject to change without notice.

