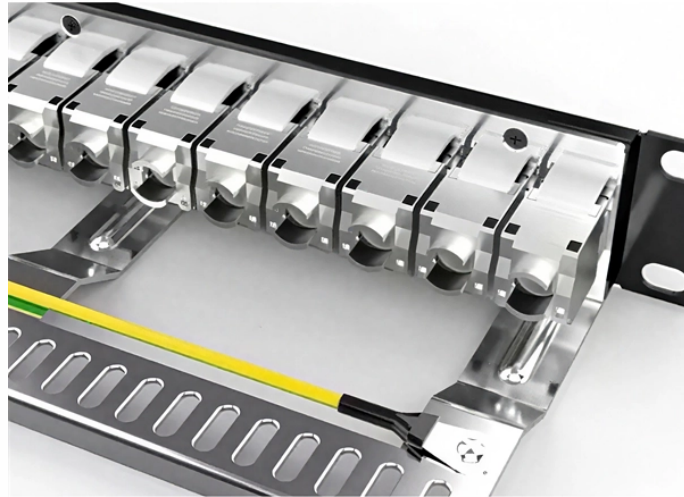
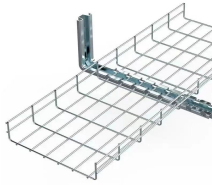


# **Fiber Optic Terminal Box 24-Core Rack-Mounted FC Interface**



## Fiber Optic Terminal Box 24-Core Rack-Mounted FC Interface



Ideal for high-density fiber optic networks, ensures signal transmission and easy maintenance. [DURABLE AND PROTECTIVE DESIGN] Constructed of cold-rolled steel with electrostatic spraying, ...



Corning has a wide variety of hardware solutions to choose from to fit your cabling needs. Choose from racks, panels, modules, splice trays, ethernet fiber switches and other structured cabling components.



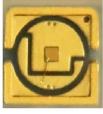
Rack mount serial dustproof cover optical fiber terminal box can be applied in the storage of indoor optical cable, distribution and terminal of various optical fiber system.



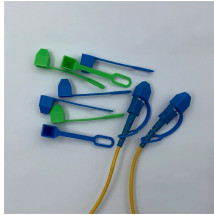
The 24-FC Fiber ODF Rack Mount Distribution Box is a compact, rack-mountable optical distribution frame designed for up to 24 fiber terminations using FC ...



It is with standard 19 inch size and properly designed to control the bend radius of the cable inside the enclosure to avoid extra optical loss. This frame is ideal for indoor fiber optic cables connection ...



The Fiber Optic Terminal Box is a kind of optical fiber management products used to distribute and protect the optical fiber links in FTTH Network. It is available for the distribution and terminal ...



Product Description Sliding Rack Mounted Fiber Optic Terminal Box for Optical network Quick Detail: Name: 1U Fiber Terminal Box Suitable Adapter: FC, SC, ST, LC Cable Diameter: 5~10mm Cable ...



Slidable Rack-mount Fiber Optic Distribution Frame has aluminum sliding fittings with self-locking functions prevent the drawer from falling when moved; 19-inch rack mount for ST, SC, LC, MTRJ, FC ...



24-port Fiber Optic Terminal Box, with FC connector. Fiber optic terminal box is a fiber management product for fiber link distribution and protection in FTTH network.



24 Fibers Rack Mounted Fiber Optic Terminal Box as Distribution Box with Pigtailed and Adapter. The Fiber Optic Terminal Box is a kind of fiber optic management product, used to distribute and protect ...



The 24-FC Fiber ODF Rack Mount Distribution Box is a compact, rack-mountable optical distribution frame designed for up to 24 fiber terminations using FC simplex adapters.

## Contact Us

For more information, pricing, or custom energy solutions, please contact us:

Website: <https://gdroofing.co.za>

Email: [sales@gdroofing.co.za](mailto:sales@gdroofing.co.za)

Phone: +27 72 418 9365

Address: 22 Electron Avenue, Isando, Johannesburg, 1600, South Africa

This document is for informational purposes only. Specifications subject to change without notice.

