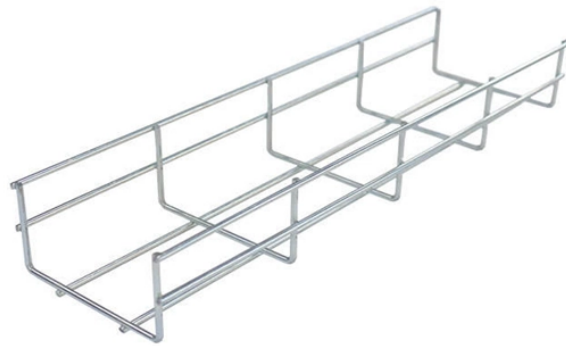


Fiber Optic Terminal Box Welding



Fiber Optic Terminal Box Welding



Learn how to install a fiber optic termination box step-by-step for FTTH projects. Covers mounting, splicing, routing, labeling, and testing for indoor/outdoor use.



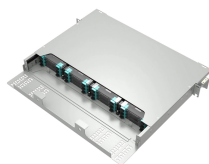
What is a fiber optic termination box? The fiber optic termination box is a box that protects the fiber optic cable and the fiber pigtail welding at the end of the fiber optic cable.



By understanding the types, installation steps, and maintenance practices, beginners can embark on the journey of building and sustaining reliable ...



One of the most important pieces used in an Optic Fiber installation is the Fiber Termination Box. An optical fiber terminal box receives its name because it's a box that's used in the ...



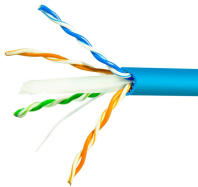
By understanding the types, installation steps, and maintenance practices, beginners can embark on the journey of building and sustaining reliable fiber optic networks with confidence.



One of the most important pieces used in an Optic Fiber installation ...



A fiber terminal box, also known as a fiber distribution box, is a device used in fiber-optic communication networks to terminate, splice, and distribute optical fibers. It is a small enclosure that ...



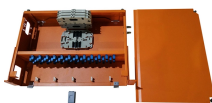
It is mainly used for the straight-through welding and branch splicing of the indoor and outdoor fiber optic cables and the fixing of the fiber optic cable terminal, which plays the role of fiber ...



FTTH Terminal Box Fiber Optic Distribution Box
Fiber to the home (FTTH) infrastructures make network organizers adopt powerful management and planning systems, FTTH termination box and Fiber ...



FTTH Terminal Box Fiber Optic Distribution Box
Fiber to the home (FTTH) infrastructures make network organizers adopt powerful management and ...



Fiber optic termination box is made of ABS and ABS+PC material, which is a box for protecting optical fiber cable and pigtail welding at the termination of the optical cable.



Fiber optic termination box series products are auxiliary equipment for terminal wiring in optical fiber transmission communication network, suitable for direct and divergent connection of indoor optical ...



Engineering analysis of common installation mistakes in fiber terminal boxes and closures, explaining structural stress, and long-term ODN instability risks.

Contact Us

For more information, pricing, or custom energy solutions, please contact us:

Website: <https://gdroofing.co.za>

Email: sales@gdroofing.co.za

Phone: +27 72 418 9365

Address: 22 Electron Avenue, Isando, Johannesburg, 1600, South Africa

This document is for informational purposes only. Specifications subject to change without notice.

