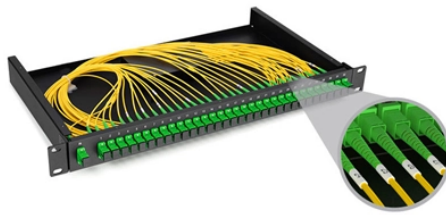


Fiber optic pigtail loss value



Overview

For each connector, we usually figure 0.3 dB loss for most adhesive/polish or fusion splice-on connectors. 75 max per EIA/TIA 568) To be able to judge whether a fiber optic cable plant is good, one does an insertion loss test with a light source and power meter and compares that to an estimate of what is a reasonable loss for that cable plant. The estimate, called a "loss budget" is calculated using typical component losses for. After measuring the loss of a fiber link, you now have to determine if that fiber link loss is acceptable or not. You can either compare this loss value to the application requirement or calculate the expected loss based on how many connectors and splices are in the link along with the length of. The optical fiber fusion splicing technology mainly uses a fiber fusion machine to connect optical fibers and optical fibers or optical fibers and pigtails, and fuse the bare fibers and optical fiber pigtails in the optical cable together into a whole, while the pigtail has a separate optical fiber. Fiber loss can be also called fiber optic attenuation or attenuation loss, which measures the amount of light loss between input and output. 75 dB (the maximum acceptable value) in the TIA standard. 5 dB, and some low insertion loss ranges from 0. Total Fiber Loss = Fiber Length × Attenuation

Coefficient Total Connector Loss = Number of Connectors × Loss per Connector
Total Splice Loss = Number of Splices × Loss per Splice
Total Link Loss = Fiber Loss + Connector Loss + Splice Loss + .

Fiber optic pigtail loss value



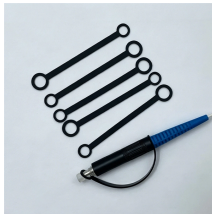
Estimate fiber attenuation, connector loss, splice loss, and budget margin for links. Compare wavelengths, distances, safety reserves, receiver limits, and operating headroom accurately.



According to the standards for the optical communications industry, the return loss of a PC fiber end face connector should be greater than 50 dB, and the return loss of APC polishing is ...



In this comprehensive guide, we will discuss these two parameters, their significance in fiber optic connectors, and the recommended reference values for insertion loss and return loss.



So, how can we know the loss value on the fiber optic link? This article will teach you how to calculate the loss in the fiber optic link and how to judge the performance of the fiber optic link.



To be able to judge whether a fiber optic cable plant is good, one does a insertion loss test with a light source and power meter and compares that to an estimate of what is a reasonable loss for that cable ...



Measurements for pigtail splice loss and reflectance will be taken using the OTDR's "two-point loss" measurement tool. Any deviation or issue regarding pigtail testing will need to be addressed by an ...



The function of the fusion splicer is to splicing two optical fibers together, so the correct use of the fusion splicer is also an important measure to reduce the optical fiber splice loss.



Nonetheless, as this paper demonstrates, an OTDR of sufficiently high resolution and dynamic range, and depending somewhat on the pigtail lengths, can accurately measure the connector loss and ...



You can either compare this loss value to the application requirement or calculate the expected loss based on how many connectors and splices are in the link along with the length of the fiber link and ...



This post introduces the main fiber loss types, the calculation process of link loss including fiber attenuation, connector loss, and splice loss, calculating power budget and calculating ...

Contact Us

For more information, pricing, or custom energy solutions, please contact us:

Website: <https://gdroofing.co.za>

Email: sales@gdroofing.co.za

Phone: +27 72 418 9365

Address: 22 Electron Avenue, Isando, Johannesburg, 1600, South Africa

This document is for informational purposes only. Specifications subject to change without notice.

