

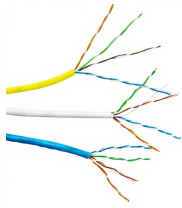
Fiber optic splicing at optical junction box



Fiber optic splicing at optical junction box



In this guide, we cover the basics of fiber optic splicing, how to perform splicing using two different methods, and finally some best practices to perform good fiber splicing.



The core principle of fiber optic splicing is to achieve low-loss, high-strength junctions between fiber ends. This involves three key steps: preparation, alignment, and bonding.



Furnished with four plugged cable ports (2 aluminum and 2 plastic) for either All-Dielectric Self-Supporting (ADSS) or Optical Ground Wire (OPGW) cables, the splice enclosure can be pre ...



Choosing the correct Fiber Optic splice box is not merely about housing splices; it's about protecting a critical network asset. The selection process must balance environmental factors, capacity, and ...



The proper length of fiber is needed to allow splicing and then neatly storing fiber in the splice tray. Inside splice closures and at each end, cables with metallic shielding or strength members must be ...



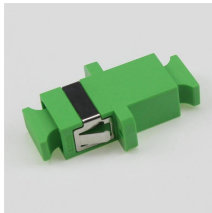
This guide will walk you through the complete process of fiber optic splicing—covering each step in detail so you can deliver a clean, professional splice every time.



Learn how to splice fiber optic cable using fusion splicing with this complete step-by-step guide. Includes tools, best practices, loss standards (ITU-T G.652), cost analysis, and FAQs for ...



Explore reliable optical fiber splice closures for network deployment. Our closures prioritize reliability, installability, and flexibility.



Discover the differences between fusion and mechanical splicing, learn how to ensure safe fiber optic splicing, and see why splice closures are essential for long-term network reliability.



A Fiber Junction Box (also called Optical Splice Closure) is a large-capacity, high-protection box used for splicing, branching, and mid-span access in outdoor networks.

Contact Us

For more information, pricing, or custom energy solutions, please contact us:

Website: <https://gdroofing.co.za>

Email: sales@gdroofing.co.za

Phone: +27 72 418 9365

Address: 22 Electron Avenue, Isando, Johannesburg, 1600, South Africa

This document is for informational purposes only. Specifications subject to change without notice.

