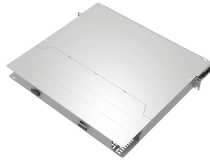


## Fiber optic wall network cable interface panel



## Fiber optic wall network cable interface panel



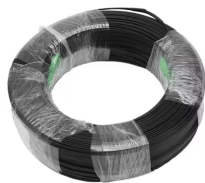
We offer NEMA rated enclosures for top-of-the-line quality and durability on indoor and outdoor fiber patch panels. A loaded fiber optic wall mount termination box comes equipped with cable routing ...



This comprehensive guide breaks down everything you need to know about wall mount fiber patch panels: their core functions, key features, advantages, installation considerations, and ...



Discover fiber optic wall plates that provide secure, high-performance connectivity. Browse a variety of port types and mounting solutions to meet your needs.



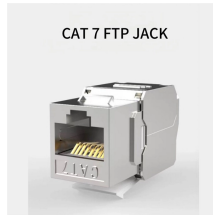
Standard wall mount enclosures from Multilink deliver distribution and connectivity solutions for network providers. All of our series of wall mount distribution panels, including the standard series, can come ...



Fiber Optic Hardware Corning has a wide variety of hardware solutions to choose from to fit your cabling needs. Choose from racks, panels, modules, splice trays, ethernet fiber switches and other ...



Transform your network infrastructure with our premium Wall Mount Fiber Optic Patch Panels and Enclosures. Engineered for seamless integration, these cutting-edge solutions offer unparalleled ...



Optimize data center efficiency with our fiber adapter panel. With a range of connector options, enable efficient deployment and future modifications of your network.



With features like integrated fiber management and easy cable distribution, Optical Cable Corporation's Wall Mount Cabinets (WTC) provide a solid foundation for any fiber optic application. Each cabinet ...



Typically constructed from durable materials, it features multiple ports for easy connectivity and integration of fiber cables. The network wall panel allows for efficient cable ...



CommScope wall boxes offer efficient fiber connectivity. Easy installation, versatile sizes, and superior cable management.

## Contact Us

For more information, pricing, or custom energy solutions, please contact us:

Website: <https://gdroofing.co.za>

Email: [sales@gdroofing.co.za](mailto:sales@gdroofing.co.za)

Phone: +27 72 418 9365

Address: 22 Electron Avenue, Isando, Johannesburg, 1600, South Africa

This document is for informational purposes only. Specifications subject to change without notice.

