

## Fiber splitter box



## Fiber splitter box



Indoor/Outdoor Wall Mounted, Single Door Fiber Distribution box is ideal for end terminations of fiber optic runs in residential or commercial buildings. Integral gasket seal provides IP54 level of protection.



The 12 port fth fiber distribution box is designed for connecting feeder cables and drop cables in fiber access networks. It is widely used in MDUs (multi-dwelling units), commercial buildings, and villas, ...



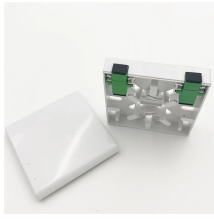
CommScope wall boxes offer efficient fiber connectivity. Easy installation, versatile sizes, and superior cable management.



The fiber splitter distribution box supports fiber splicing, splitting, distribution, "three in one" and fiber optic distribution box also offers solid protection and fiber cable management for FTTX network ...



Deploying compact FS PLC Splitters to simplify your networks, perfectly fits your PON, EPON, FTTX, etc.



The 12 port fthh fiber distribution box is designed for connecting feeder cables and ...



6-Core FTTH Fiber Distribution Termination Box with 6 SC Adapters, IP65 Waterproof, Wall-Mount Enclosure for Residential/Commercial Fiber Optic Splicing & Management (with 6 SC Adapter)



Feature: 12 ports optical fiber distribution box is used for the fusion splicing, splitting, wiring transmission and other functions of the optical transmission terminal; It can effectively terminate, protect and ...



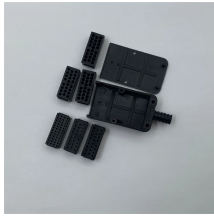
Discover a wide range of high-quality Fiber Optic Products, including termination boxes, splice enclosures, patch panels, and PLC splitters. Perfect for FTTH, telecom, and enterprise networks.



Indoor/Outdoor Wall Mounted, Single Door Fiber Distribution box is ideal for end terminations of fiber optic runs in residential or commercial buildings. Integral ...



Fiber Optic Distribution Box, 6 Port Wall Mount Enclosure with 6 LC Duplex Adapters, Singlemode, FTTH, IP65 Waterproof Outdoor/Indoor Use - 8.27" x 5.31" x 1.57"



This 4 strand optical fiber distribution box is used for the fusion splicing, splitting, wiring transmission and other functions of the optical transmission terminal. It can effectively terminate, protect and manage ...

## Contact Us

For more information, pricing, or custom energy solutions, please contact us:

Website: <https://gdroofing.co.za>

Email: [sales@gdroofing.co.za](mailto:sales@gdroofing.co.za)

Phone: +27 72 418 9365

Address: 22 Electron Avenue, Isando, Johannesburg, 1600, South Africa

This document is for informational purposes only. Specifications subject to change without notice.

