

Fiberglass Thin Film Floating Tail



Overview

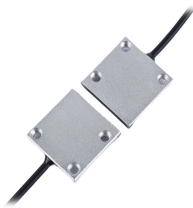
It is made of translucent fiberglass and eight-point transparent fiberglass. no bleaching tail paint is applied suitable for making competitive floats, casual floats, length 28cm, yuan diameter 0. 0 . The use of filament-wound fiberglass liquid-hydrogen propellant tank structures should result in a considerable weight savings providing that a suitable internal liner can be developed. This report investigates the use of free-floating liners not bonded to the inner surface of the filament-wound. Fiberglass 71 X 12. 5 Inch curve to match the top of the bunk. On a square tail longboard I recently glassed the corners of the tail had a spot where the glass didn't meet up, so I had to fill the voids with resin. I also have tough times with round-pin tails and longboard noses where I can't get the glass to wrap tightly to the corner and then when I sand the. Instead of "glueing" the starboard can you thru bolt it in place (nut & screw w/washer each side) then use screws to mount your brackets to the starboard?

The GSD20 can be mounted remotely, I think up to about 6-7' away. Of course you should use stainless hardware.

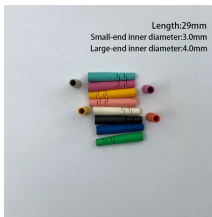
Fiberglass Thin Film Floating Tail



I can't seem to get the nose or tail laps to a point where I don't need to go back and do damage repair to almost all of them! On a square tail longboard I recently glassed the corners of the ...



The use of filament-wound fiber-glass liquid-hydrogen propellant tank structures should result in a considerable weight savings providing that a suitable internal liner can be developed. This report ...



Homebuilt Aircraft & Kit Plane Forum



In this work, we report a floating solid-state thin film (FSTF) that shows multiple optical responses encompassing multicolours for a single photonic device. High-mobility and reflectivity...



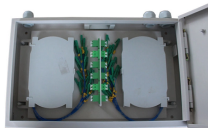
Fiberglass 71 X 12.5 X 14.50 trim has a 1.5 Inch curve to match the top of the bunk. Aluminum Installation Brackets Included. Mounting surface of the whale tail will have to be trimmed to match the ...



I need to mount some electronics inside my console (Garmin GSD20 sounder, VHF radio, bus bars, etc.), but unfortunately the fiberglass is quite thin (say 1/8 inch).



All our fiberglass handles are rolled on proprietary mandrels using specific tapers developed by AFTCO and are fitted in our factory with the same stainless steel ...



It is made of translucent fiberglass and eight-point transparent fiberglass. it is tapered into a tapered floating tail. no bleaching tail paint is applied suitable for making competitive floats, casual ...



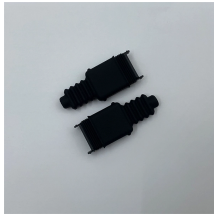
This is the first fiberglass fuselage and canopy I made, for my sport jet kit. The "cloudy" surface is a result of unnecessary filler I mixed with the epoxy, but the ...



I am talking about the whale tail type of spoiler that came stock on my 86 Trans Am, similar to the 91-92 style spoilers, not the pedestal type like on the 82-84 Trans Am's. the factory ...



This morning when i came out in the garage i noticed some dry cloth or blisters near the tail where the cloth wraps around the sharp railedge. These blisters are small but i think i'll try and fill ...



Investigation of Thin Films as Floating Liners for Fiber-Glass Cryogenic Propellant Tanks. The use of filament-wound fiber-glass liquid-hydrogen propellant tank structures should result in a considerable ...



The object of the research reported herein was to evaluate the concept of the floating liner and develop a method of liner fabrication. Liners were made of laminated Teflon, Mylar, aluminum-Teflon, and ...

Contact Us

For more information, pricing, or custom energy solutions, please contact us:

Website: <https://gdroofing.co.za>

Email: sales@gdroofing.co.za

Phone: +27 72 418 9365

Address: 22 Electron Avenue, Isando, Johannesburg, 1600, South Africa

This document is for informational purposes only. Specifications subject to change without notice.

