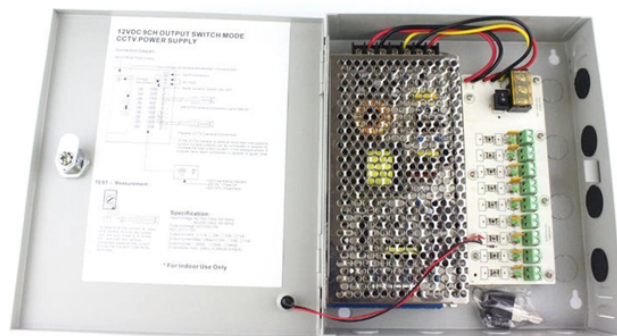


GDR Telecom Site Energy Systems

Fiji Price Linear Drive Pluggable Optical 200G



Fiji Price Linear Drive Pluggable Optical 200G



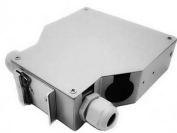
In this section, we will explore several emerging technology solutions that the industry is currently developing. These advancements highlight potential future directions for the industry and ...



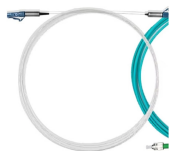
Most optical module revenue right now comes out of this architecture. LRO (Linear Retimed Optics). Retiming kept, DSP replaced with a linear driver. The middle step between FRO ...



This paper will present link performance simulation results from system modeling of linear optics at 200G/lane. The paper also will identify key component and host system design parameters and ...



Linear Pluggable Optics (LPO) is a term used in the context of optical networking to describe a form factor and interface standard for high-speed optical transceivers. LPO modules are designed to ...



Linear-drive pluggable optical transceiver module refers to LPO modules. These are optical transceivers designed to operate at lower power consumption levels compared to traditional optical modules. ...



Linear Pluggable Optics (LPO) is a term used in the context of optical networking to describe a form factor and interface standard for high-speed optical transceivers. LPO modules are designed to ...



3.2 Linear-Drive Pluggable Optics (LPO): Eliminating DSP for Power Efficiency LPO technology removes the DSP chip from the optical module, significantly reducing power consumption while maintaining ...



It focuses on the data center network interconnection scenario, targeting to determine the optimal interconnect architecture, define interface specifications of the 800G pluggable optical modules, build ...



Another technology discussed in the report is Linear Drive Pluggable (LPO) transceivers and AOCs. The report includes historical data (2021-2024) and forecast (2025-2029) for shipments, revenues and ...



The advantage of Linear pluggable optics is the lower power consumption and lower latency. The module power consumption gets reduced by around 40% when keeping the Host ASIC/system ...



These demonstrations feature advancements in 200G per lane technology, along with new product additions to its portfolio of optical, high-speed analog and mixed signal solutions.



This report segments the global Linear-Drive Pluggable Optics Modules (LPO) market comprehensively. Regional market sizes, concerning products by Type, by Application, and by players, are also provided.

Contact Us

For more information, pricing, or custom energy solutions, please contact us:

Website: <https://gdroofing.co.za>

Email: sales@gdroofing.co.za

Phone: +27 72 418 9365

Address: 22 Electron Avenue, Isando, Johannesburg, 1600, South Africa

This document is for informational purposes only. Specifications subject to change without notice.

