

Fire alarm linkage for cold aisle windows in computer room



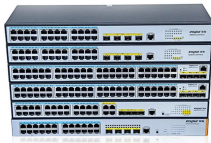
Overview

Magnetic fuse links are electrically activated by smoke alarms or other detection systems. The choice depends on the type of fire suppression system used in the computer room. For computer rooms with traditional heat activated water sprinkler systems (wet or dry pipe). IT equipment spaces: Use NFPA 75 as the design lens for protecting IT equipment and rooms. org) Sprinklers: Where sprinklers are required, specify to ABNT NBR 10897 (Brazil) or NFPA 13 (US). In critical white space. Fire Alarms Online can help with system concepts, code-focused review, and practical field guidance for challenging server room and data center applications. VESDA, short for Very Early Smoke Detection Apparatus, continuously draws air through a sampling pipe network to a detector chamber rather. to cool data centers, new methods, such as hot aisle cold aisle containment, are becoming increasingly prevalent.

Fire alarm linkage for cold aisle windows in computer room



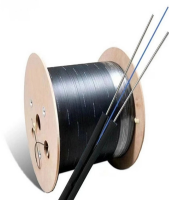
Server rooms need strong cooling and fire protection systems. QRFS examines aisle containment systems and how they can impede fire protection.



For computer rooms with gas-based suppression systems activated by smoke sensors, magnetic links are used. The electrically activated link can be triggered by the existing fire alarm system using user ...



The cable routing penetrates fire-resistant components, i.e. walls and ceilings. In addition, cables are also installed in emergency and escape routes. In both cases, care should be taken to ensure that a ...



The complete engineering, design, code, installation, commissioning, and troubleshooting guide for hot aisle, cold aisle, underfloor, above-ceiling, and cabinet-level aspirating ...



A practical, standards-based guide to fire detection and suppression in data centers. Covers NFPA 75/2001, TIA-942 and more.



Server rooms need strong cooling and fire protection systems. QRFS examines aisle containment systems and how they can impede fire protection.



This standard covers the requirements for the protection of information technology equipment and information technology equipment areas from fire damage by fire or its associated effects--smoke, ...



The combination of these technologies gives FFAST unsurpassed sensitivity and accuracy, ensuring that alarms are coming from smoke and not nuisance particulate, such as dust, which can be ...



A passive dry contact alarm signal of the customer's fire extinguishing system can be used to achieve the following purposes: (1) Open the skylight using the ECC800-Pro AI/DI port, so that the fire ...



At its core, CAC is a physical method of airflow management designed to optimize cooling efficiency. It involves creating an enclosed "cold aisle" between rows of server racks. The ...



Where Cold Aisles are part of the room being protected, we try to include nozzles in the aisles wherever possible. This is because of a requirement in BS EN 15004 that "the type, number ...

Contact Us

For more information, pricing, or custom energy solutions, please contact us:

Website: <https://gdroofing.co.za>

Email: sales@gdroofing.co.za

Phone: +27 72 418 9365

Address: 22 Electron Avenue, Isando, Johannesburg, 1600, South Africa

This document is for informational purposes only. Specifications subject to change without notice.

