

## Fire protection and low-voltage power cable trays are shared



### Overview

Power-Limited Fire Alarm (PLFA) circuits, which make up the majority of modern fire alarm systems, are generally permitted by the NEC to share a cable tray or raceway with communications circuits, provided certain conditions are met. While all data cable is ran within cable tray, about 20% or so of the fire alarm cable is sharing the same tray. The commissioning agents for the project have recently told us that this is against code, however in speaking with our fire alarm subcontractor they do not believe that to be the case -. Scope: Firestopping for busway, cable trays, cables, and trunking passing through walls in enclosed electrical installations. Where cables pass through shafts, walls, slabs, or enter electrical panels or cabinets, openings shall be tightly sealed with firestopping materials in accordance with. Chapter 2 pertains to building electrical wiring requirements and applies to the primary power wiring going to a low-voltage system, as this wiring is typically the electrical contractor's responsibility, not the low-voltage contractor's. Therefore, safety regulations enforce strict requirements for the physical installation and protection of these conductors, often mandating separation from.

## Fire protection and low-voltage power cable trays are shared



Why It Matters: When power and limited energy circuits share a pathway, physical contact or voltage crossover can cause interference or damage. Best Practice: Use divider brackets ...



Power-Limited Fire Alarm (PLFA) circuits, which make up the majority of modern fire alarm systems, are generally permitted by the NEC to share a cable tray or raceway with ...



Low-voltage cables are categorized based on the circuit to which they are intended to be connected. Fire alarm systems require FPL-type cables, while other systems may use CL2-type or CL3-type ...



Cable tray installation must comply with specific technical standards to ensure electrical safety, system reliability, and long-term maintainability. This document outlines the key requirements for cable tray ...



Cable Trays have been permitted in the hazardous (classified) locations in the National Electrical Code for Class I (flammable vapor and gases) since the 1978 NEC and have been used extensively in ...



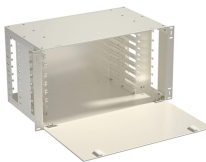
Cable tray installation must comply with specific technical standards to ensure electrical safety, system reliability, and long-term maintainability. This document ...



We are in the middle of a project where we have roughly 60% of all fire alarm (Type FPLP) and telecommunication cable (Cat6A, CMP) is already installed. While all data cable is ran ...



This article explains the main requirements and good practices for cable tray systems, including tray types, materials, loading, supports, bonding, cable selection, and installation details.



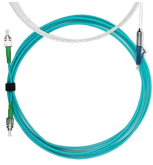
In a typical LV substation, cable trays are installed to facilitate the outgoing and incoming cables. These trays should be designed to be located with sufficient clearances around them to ...



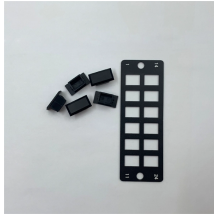
If not designed and installed properly, wiring inside cable trays may pose hazards such as fire, electric shock, and arc-flash blast events.



Electrical cable tray wall penetration firestopping  
Scope: Firestopping for busway, cable trays, cables, and trunking passing through walls in enclosed electrical installations.



In a typical LV substation, cable trays are installed to facilitate the outgoing and incoming cables. These trays should be designed to be located with ...



Electrical cable tray wall penetration firestopping  
Scope: Firestopping for busway, cable trays, cables, and trunking passing through walls in enclosed ...

## Contact Us

For more information, pricing, or custom energy solutions, please contact us:

Website: <https://gdroofing.co.za>

Email: [sales@gdroofing.co.za](mailto:sales@gdroofing.co.za)

Phone: +27 72 418 9365

Address: 22 Electron Avenue, Isando, Johannesburg, 1600, South Africa

This document is for informational purposes only. Specifications subject to change without notice.

