

Fire protection module installation distribution box



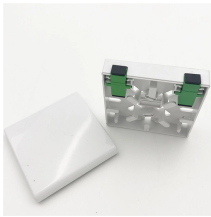
Fire protection module installation distribution box



It is available in flush-mounted and surface-mounted versions, with 16-module and 32-module base options to meet various installation needs. Offering a modern aesthetic with transparent ...



Environmentally sealed polycarbonate IP65 box with transparent lid and integral 10 mm cable gland. Powered with a widely available CR123A (replaceable) 3V lithium camera cell. Comprehensive ...



This publication shows how to wire and install the 4010-9825 24V Distribution Block into a 4010 Fire Alarm Control Panel (FACP). Refer to the 842-058 Field Wiring Diagram for additional wiring ...



The information contained in this manual must be utilized by the factory trained Fike distributor in order to properly install, test and service the Multi-Interface Module. This manual can also be used by the ...



To protect against overheated ECUs, we've manufactured an ECU fire protection system consisting of an ECU cover housed with intumescent lining. The flexible cloth can nestle around cables, conduits ...



As a leading manufacturer of high-quality cable junction and connection boxes, as well as durable surface-mounted distribution boards, Spelsberg is especially well-qualified for development of fire ...



The PIP-1AN/Distribution box consists of two parts: a cover and a base (octagonal shape), which are connected together with two screws. The PIP-1AN/Distribution box allows you to connect and branch ...



Learn how to install a distribution box safely and correctly. Covers wiring, placement, standards, and expert tips for a compliant setup.



Trusted Sellers · Easy Buying Process



ABB offers an innovative enclosure system for fire prevention, which is constructed of fireproof materials, features optimum technology and is available in a variety of economical designs.



T& D supply customised fire proof junction boxes using the Abtech BPG range of enclosures fitted with ceramic terminals blocks to withstand extreme heat and fire with versatile cable termination options - ...

Contact Us

For more information, pricing, or custom energy solutions, please contact us:

Website: <https://gdroofing.co.za>

Email: sales@gdroofing.co.za

Phone: +27 72 418 9365

Address: 22 Electron Avenue, Isando, Johannesburg, 1600, South Africa

This document is for informational purposes only. Specifications subject to change without notice.

