

Flat-head beam splitter



Flat-head beam splitter



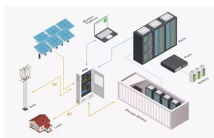
Our beam splitters are made from high grade glass material with laser grade surface flatness & surface quality for tighter tolerance on the splitting ratio.



With special coating equipment it is possible to reduce the surface tensions as far as possible and to produce very flat beam splitters with a standard thickness of 1 mm.



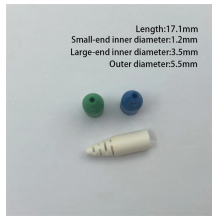
Thorlabs offers a wide range of optical beamsplitters. Our plate beamsplitters have a coated front surface that determines the beam splitting ratio while the back surface is wedged and AR coated in ...



Beamsplitters are optical components used to split input light into two separate parts. Beamsplitters are common components in laser or illumination systems. Beamsplitters are also ideal for fluorescence ...



There are two main types of beamsplitters, plate beamsplitter and cube beamsplitter and each has their own advantages. Some industries that use beamsplitters are interferometry, bio-medical, metrology, ...



Beam splitters are devices for splitting a laser beam into two or more beams. There are different types, including polarizing and non-polarizing versions.



LightMachinery's range of beam splitters includes polarizing and dichroic. We make custom beam splitters to fit your unique specifications. Learn more!



Beamsplitters operate by splitting light based on reflection/transmission (R/T) ratios or specific properties like polarization or wavelength. Available in cube and plate configurations, these versatile ...



Our expert technical staff will guide you through the many options we offer, ranging from custom split ratios, unique materials, and custom coatings to unusually large or small dimensions.



They consist of a flat, thin glass plate with a coating on the first surface of the substrate. This coating splits the incident beam by a specified ratio. The reflected and transmitted optical paths have ...

Contact Us

For more information, pricing, or custom energy solutions, please contact us:

Website: <https://gdroofing.co.za>

Email: sales@gdroofing.co.za

Phone: +27 72 418 9365

Address: 22 Electron Avenue, Isando, Johannesburg, 1600, South Africa

This document is for informational purposes only. Specifications subject to change without notice.

