

GDR Telecom Site Energy Systems

Free quote for co-packaged optical NRZ



Free quote for co-packaged optical NRZ



Co-packaged Optics (CPO) Large-scale data-center networking and switches & Rise of data-intensive AI/ML applications [Broadcom Tomahawk-3] Demands significantly larger off-package I/O bandwidths!



Co-packaged optics (CPO) has evolved as a solution to meet the growing demand for data. Compared to typical optoelectronic connectivity ...



What is Co-Packaged Optics? Co-Packaged Optics (CPO) is a technology and design approach where optical components, such as lasers and photodetectors, ...



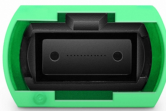
Optical transceivers can be co-packaged with XPU's and/or switches using 2.5D or 3D packaging approaches. 2.5D co-packaged optics (CPO) is ultimately limited by the beachfront density between ...



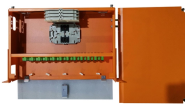
With integration, as the optical modules get smaller and are co-packaged with electrical host ASIC, the power at this interface can be reduced. With even tighter integration, we may not need a DSP inside ...



Co-Packaged Optics (CPO) has long promised to transform datacenter connectivity, but it has taken a long time for the technology to come to market, with tangible deployment-ready products ...



Co-packaged optics (CPO) technology offers a promising solution by integrating photonic integrated circuits (PICs) directly within or close to electronic integrated circuit (EIC) packages.



Power and cost efficiency are paramount for AI/ML applications and data centers. Enter Coherent shortwave co-packaged optical transceivers. 16 channels, 50-gigabyte NRZ, multimode CPO.



It represents a natural evolution from transceivers with 100G optical lanes and is more power-efficient and cost-effective than previous generations. This technology is expected to form the ...



VCSEL based optical engines with multimode fibers have the potential to be the lowest cost and lowest power option for co-packaged optics for short reach applications.



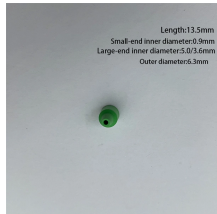
It can evaluate both optical-engine optical signals from 10G to 800G as well as electrical signal waveform quality.



With advantages in low power consumption, reduced latency, and cost efficiency, these arrays are designed to support the transition to Near ...



This paper presents a 4-channel co-packaged optical RX that integrates a photo diode array, fiber termination and a transimpedance amplifier front end (TIA-FE)



One primary motivation for co-packaged optics is improving power efficiency. Both Broadcom and NVIDIA report dramatic power-per-bit savings over traditional pluggable transceivers.

Contact Us

For more information, pricing, or custom energy solutions, please contact us:

Website: <https://gdroofing.co.za>

Email: sales@gdroofing.co.za

Phone: +27 72 418 9365

Address: 22 Electron Avenue, Isando, Johannesburg, 1600, South Africa

This document is for informational purposes only. Specifications subject to change without notice.

