

Fully equipped optical junction box



Fully equipped optical junction box



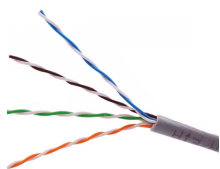
This 12 port fiber access terminal box is designed to connect feeder cables to subscriber drop cables for FTTH last-mile fiber connectivity. It integrates fiber splicing, optical signal splitting, termination and ...



In short, this 8-port universal fc/sc/st fiber terminal box, fully equipped with 2/4/6/8-core fiber optic fusion splicing boxes, wiring boxes, and protective boxes, is a top performer in fiber optic ...



The optical fiber desktop box is equipped with dual optical fiber adapter placement holes and pigtail or flexible cord outlet holes, which can realize single-core or dual ...



We offer a wide range of 1-24 core FDB boxes and ODF cabinets for indoor/outdoor FTTX deployment. Durable, IP65 rated, and easy to install. Browse our models and get a wholesale quote.



The optical fiber desktop box is equipped with dual optical fiber adapter placement holes and pigtail or flexible cord outlet holes, which can realize single-core or dual-core optical fiber access and port output.



This 12 port fiber access terminal box is designed to connect feeder cables to ...



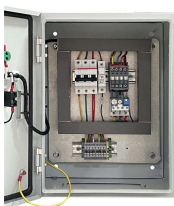
The fiber optic terminal box is designed for FTTx applications, accommodating at least 4-16 users. It provides ample space for splicing, splitting, storage, and cable management. Suitable for both indoor ...



This SMC 72-core fiber terminal box offers a robust, versatile, and efficient solution for modern fiber optic network installations, combining durability with ease of use and comprehensive protection for your ...



We offer various ranges of an optical joint closure from a small count to a super high count for under ground and aerial installation, and also offer an optical cabinet with compact size suitable for limited ...



Understanding the role and benefits of an optical junction box is fundamental for anyone looking to set up or enhance a fiber optic network. Following the steps outlined above will help you ...



The 12 port fttb fiber distribution box is designed for connecting feeder cables and drop cables in fiber access networks. It is widely used in MDUs (multi-dwelling units), commercial buildings, and villas, ...



Fiber Optic Wall Mount Box with LC Couplers for Single Mode & Multimode Fiber Optic Cable. | Fiber Box Enclosure for MPOE's, Network Rooms, and IDF Rooms. (LC 6 Strand OS1/OS2)

Contact Us

For more information, pricing, or custom energy solutions, please contact us:

Website: <https://gdroofing.co.za>

Email: sales@gdroofing.co.za

Phone: +27 72 418 9365

Address: 22 Electron Avenue, Isando, Johannesburg, 1600, South Africa

This document is for informational purposes only. Specifications subject to change without notice.

